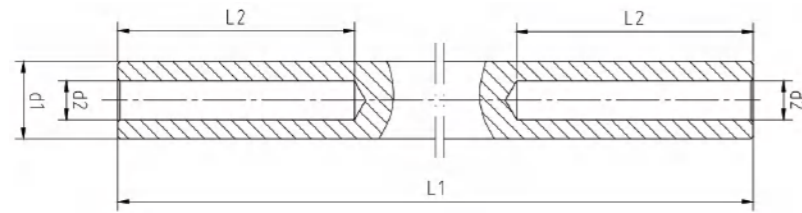


## 辊杆 Rolling Rods

特点: 在240°C ~ 280°C 高温下长期工作不变形。  
Features: no deformation when working at high temperature of 240°C - 280°C for a long time.

规格 Specifications:

- d1 = 15 - 22 mm
- d2 = 5 - 9 mm
- L1 ≤ 3150 mm
- L2 ≤ 175 mm



直线度 Straightness	圆度 Roundness	表面光洁度 Surface finish	表面硬度 Surface hardness	表面淬火处理深度 Surface quenching depth	材质 Material
< 0.15/1000 mm	< 0.005 mm	Ra < 0.4 μm	HRC 50-55	> 1.0mm	轴承钢 Bearing steel

## 库斯特压机链毯 Roller Chain for Kusters Press

适配库斯特压机, 可替代原厂配件。  
Compatible with Kusters press, replacement accessories of the one from OEM.



铭客 (Mingke),  
专精特新“小巨人”企业,  
专注于环形钢带 - 高强度连续成型模具带的生产制造,  
并提供以环形钢带为载体的连续化流程工艺解决方案。  
铭客在中国、中国台湾、波兰、土耳其、泰国、  
澳大利亚、越南、巴西等全球10+国家和地区有销售和服务中心。

MINGKE  
National “Specialised, Refined, Distinctive and Innovative” “Little Giant”  
Enterprise, specialized in endless steel belt, high strength continuous  
molding belt and providing continuous process solutions based on  
endless steel belt.

Our sales and service centers are located in 10+ countries  
and regions around the world, such as China, Taiwan  
China, Poland, Turkey, Thailand, Australia,  
Vietnam, Brazil and so on.

南京铭客传动系统有限公司

电话: +86 25-56806003  
邮箱: marketing@mingkebelt.com  
地址: 南京市高淳经济开发区桃园北路50号, 邮编 211316

Nanjing Mingke Process Systems Co., Ltd.

Tel: +86 25-56806003  
Email: sales@mingkebelt.com  
Add: No. 50 North Taoyuan Rd., Gaochun Economic Dvpt. Zone,  
Nanjing City, Jiangsu Prov. 211316, China

上海办事处

电话: +86 189 1597 9385  
地址: 上海市青浦区诸光路 1588 弄虹桥世界中心 E2 栋 312 室

Shanghai Office

Tel: +86 189 1597 9385  
Add: Rm. 312, 3th Floor, Bldg. E2, Hongqiao World Center,  
Lane 1588, Zhuguang Rd., Qingpu Dist., Shanghai 201799, China

广州办事处

电话: +86 189 1597 9385  
地址: 广州市番禺区石楼镇石清公路 78 号 (中创云谷) A 栋 512 室

Guangzhou Office

Tel: +86 189 1597 9385  
Add: Rm 512, Building A, Zhongchuang Yungu, No. 78 Shiqing Rd.,  
Shilou Town, Panyu Dist., Guangzhou City, Guangdong Prov., China

波兰售后服务中心

After-sale Service Center in Poland

Wilhelm Herm. Müller Polska Sp. z o.o.  
Add: 85-862 Bydgoszcz, ul. Solna 20, Poland

[www.mingkebelt.com](http://www.mingkebelt.com)

人造板环形钢带  
CPL压机系列  
WOOD BASED PANEL INDUSTRY  
CPL CONTINUOUS PRESS

  
MINGKE

## 人造板行业专用模具带

### Molding Belts for Wood Based Panel

覆盖人造板平压线、单层压机、辊压线生产环节。

Covering the production processes of wood based panel double belt press, single opening press and mende press lines.



#### 应用

##### Applications

- 中密度纤维板 Medium Density Fiberboard (MDF)
- 高密度纤维板 High Density Fiberboard (HDF)
- 刨花板 Particle Board (PB)
- 定向刨花板 Oriented Structural Board (OSB)
- 单板层积材 Laminated Veneer Lumber (LVL)
- 其他 Others

#### 模具带型号

##### Molding Belt Model

- **MT** MT1650
- **CT** CT1320
- **CT** CT1100L

#### 模具带尺寸

##### Dimension of Molding Belt

- 长度 Length- ≤150 m/pc 可定制 Customizable
- 宽度 Width- 1400-3400 mm
- 厚度 Thickness- 1.2-3.5 mm

#### 模具带型号及主要性能参数

##### Molding Belt Model & Main Specifications

钢材类型 Type of steel		马氏体不锈钢带 Martensitic stainless steel		碳钢钢带 Carbon steel belt	
指标 Index	型号 Model	MT1650	CT1100L	CT1320	
抗拉强度 (Mpa) Tensile strength (Mpa)		1600	1100	1210	
屈服强度 (Mpa) Yield strength (Mpa)		1550	1050	1050	
疲劳强度 (Mpa) <sup>(1)</sup> Fatigue strength (Mpa)		±630	±380	±430	
硬度 (HV <sub>0.05</sub> ) Hardness (HV <sub>0.05</sub> )		480	460	360	
延伸率 % Elongation %		5	9	10	
焊接系数 Welding factor		0.8	0.73	0.9	

<sup>(1)</sup> 测试样品的 50% 可以承受 2,000,000 次负荷循环。

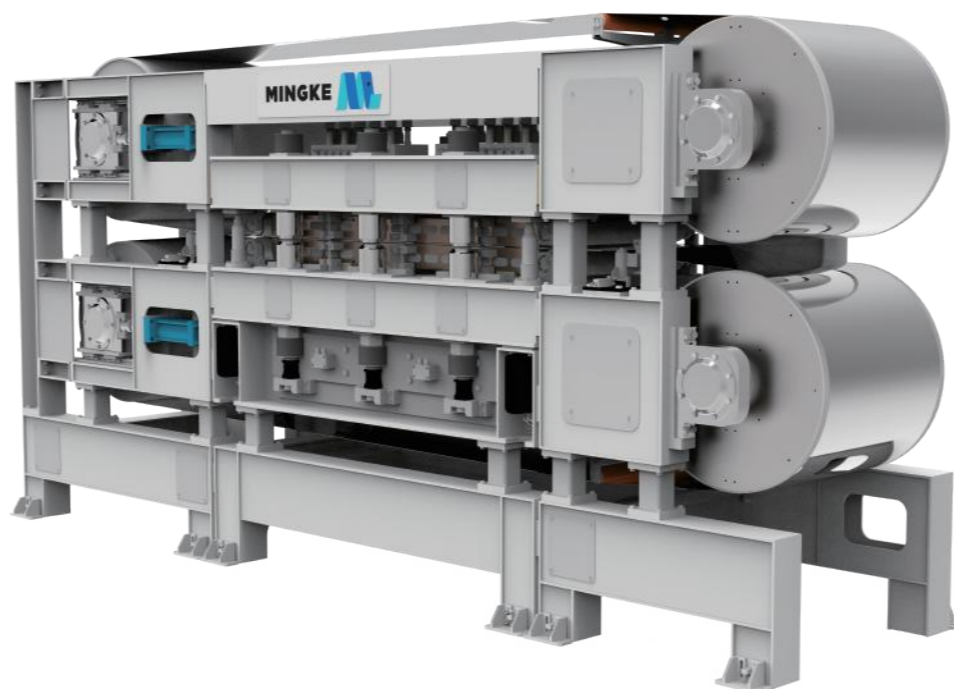
<sup>(2)</sup> 50% of the test specimen withstand a minimum of 2\*10<sup>6</sup> load cycles.

\* 本资料中数据虽具代表性但并不受绝对保证。数据亦会因所用材料不同而改变。

\* The information and data presented in this data sheet are typical values, but not guaranteed. The information may be subjected to changes in material, properties and/or performance.

## CPL 连续压机

### CPL Continuous Press



#### 主要参数 Main Parameters

加工宽度 Processing width	400-1400mm	运行速度 Running speed	0.1-30m/min
温度范围 Temperature range	常温至 220°C Room temperature to 220°C	产品厚度 Product thickness	0.15-1.2mm
压力范围 Pressure range	0-40 bar	有效压区长度 Length of effective press zone	1-10m

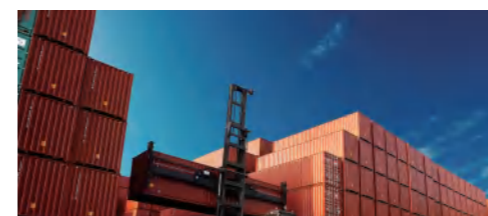
#### 优点 Advantages

- 压力稳定，没有应力变形，保证产品质量  
The pressure is stable and there is no stress deformation
- 导热性能更好，导热介质直接传递热量  
The thermal conductivity is excellent, and the heat transfer medium directly transfers heat
- 自动记录运行参数，辅助工艺升级  
Automatic recording of operating parameters to assist in process upgrades



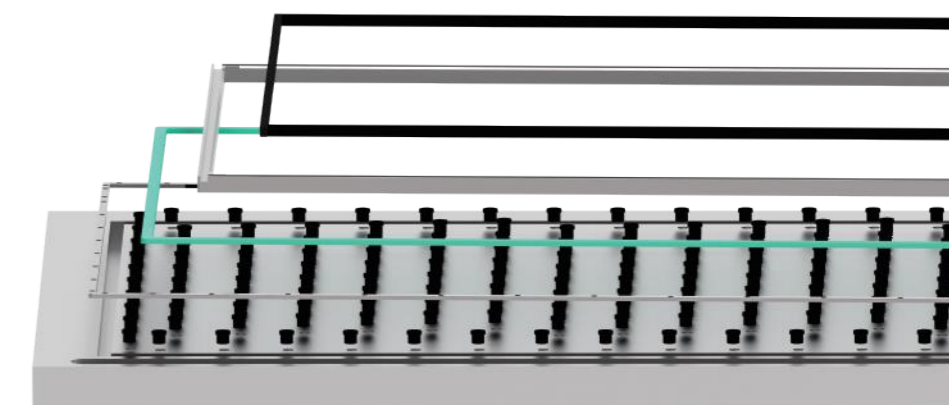
#### 应用 Applications

- 工业层压材料 Industrial laminates
- 装饰覆面材料 Decorative cladding material
- 装饰层压板与家具 Decorative laminate and furniture
- 工程木材与复合板材 Engineered wood and composite panels
- 塑料地板与运输材料 Plastic flooring and transportation materials
- 其它 Others



## 密封系统

### Sealing System



## 镀铬模具带

### Chrome-plated Molding Belt

#### 优势 Advantages

- 耐磨延寿  
Wear resistant and extend lifespan
- 耐高温稳定  
Temperature resistant and stable
- 防腐护表，隔绝侵蚀威胁  
Anti corrosion and surface protection, isolating the threat of erosion
- 助力脱模，提升工艺流畅性  
Assist in demolding and improve the smoothness of the process

