



南京铭客传动系统有限公司

电话: +86 25-56806003

邮箱: marketing@mingkebelt.com

地址: 南京市高淳经济开发区桃园北路 50 号, 邮编 211316

Nanjing Mingke Process Systems Co.,Ltd.

Tel: +86 25-56806003

Email: sales@mingkebelt.com

Add: No. 50 North Taoyuan Rd., Gaochun Economic Dvpt. Zone,
Nanjing City, Jiangsu Prov. 211316, China

上海办事处

电话: +86 189 1597 9385

地址: 上海市青浦区诸光路 1588 弄虹桥世界中心 E2 栋 312 室

Shanghai Office

Tel: +86 189 1597 9385

Add: Rm. 312, 3th Floor, Bldg. E2, Hongqiao World Center,
Lane 1588, Zhuguang Rd., Qingpu Dist., Shanghai 201799, China

广州办事处

电话: +86 189 1597 9385

地址: 广州市番禺区石楼镇石清公路 78 号 (中创云谷) A 栋 512 室

Guangzhou Office

Tel: +86 189 1597 9385

Add: Rm 512, Building A, Zhongchuang Yungu, No. 78 Shiqing Rd.,
Shilou Town, Panyu Dist., Guangzhou City, Guangdong Prov., China

波兰售后服务中心

After-sale Service Center in Poland

Wilhelm Herm. Muller Polska Sp z o.o.

Add: 85-862 Bydgoszcz, ul. Solna 20, Poland

www.mingkebelt.com



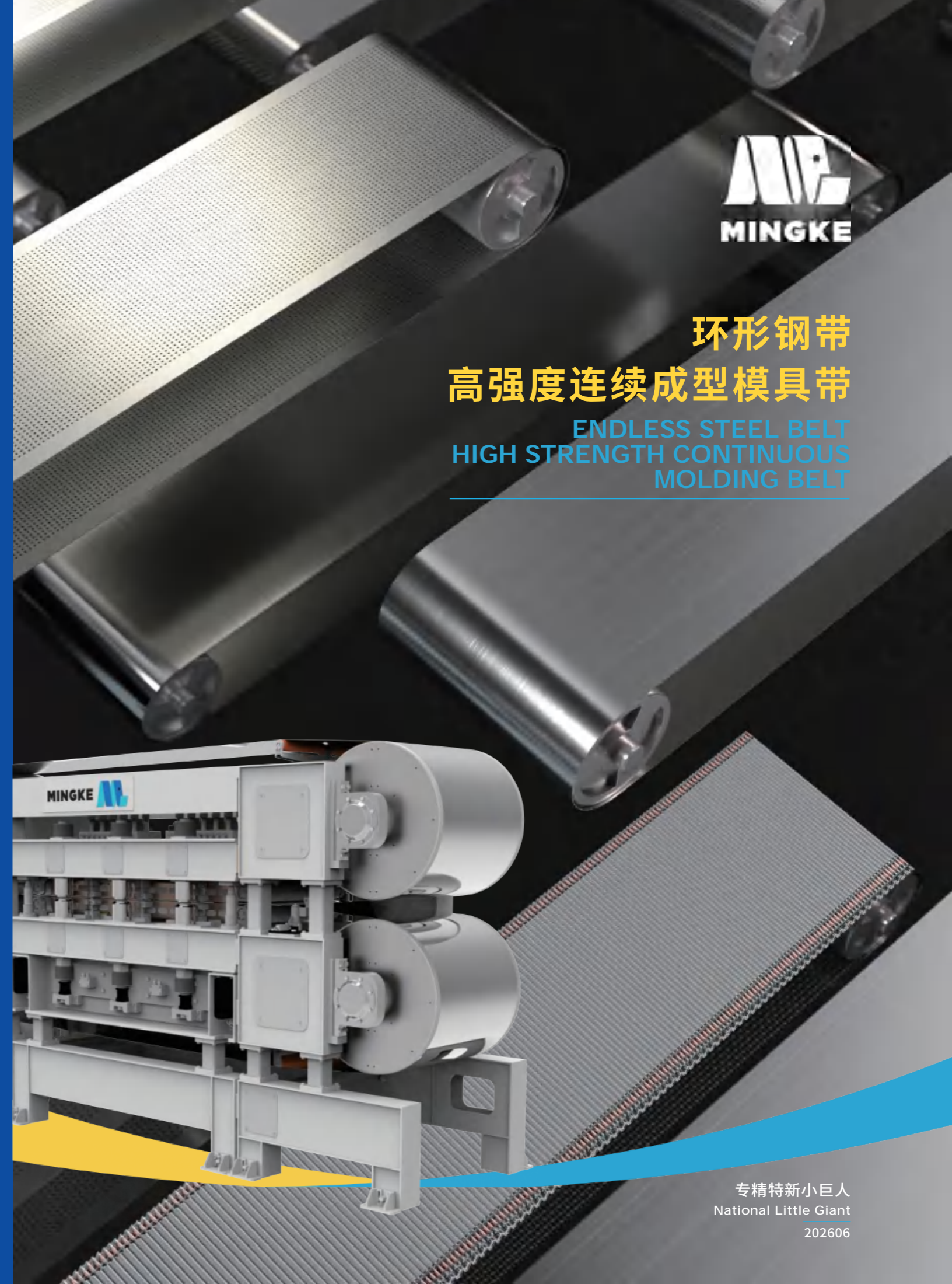
南京铭客传动系统有限公司

Nanjing Mingke Process Systems Co.,Ltd.



环形钢带 高强度连续成型模具带

ENDLESS STEEL BELT
HIGH STRENGTH CONTINUOUS
MOLDING BELT



专精特新小巨人
National Little Giant

202606

Explore Steel Belt Art

不断探索钢带艺术

目录 CONTENTS

01

关于我们
ABOUT US

06

辊杆 & 链毯
ROLLING RODS &
ROLLER CHAIN

11

人造板行业
WOOD BASED PANEL

19

化工行业
CHEMICAL

26

配件
ACCESSORIES

03

静等压式双钢带压机
ISOBARIC DOUBLE
BELT PRESS

07

薄膜流延行业
FILM CASTING

15

橡胶行业
RUBBER

23

其他用途模具带
MOLDING BELTS FOR
OTHER APPLICATIONS

27

模具带服务
MOLDING BELT SERVICES

05

密封系统 & 镀铬模具带
SEALING SYSTEM &
CHROME-PLATED MOLDING BELT

09

陶瓷行业
CERAMIC

17

食品行业
FOOD

25

模具带纠偏系统
MOLDING BELT TRACKING
SYSTEMS

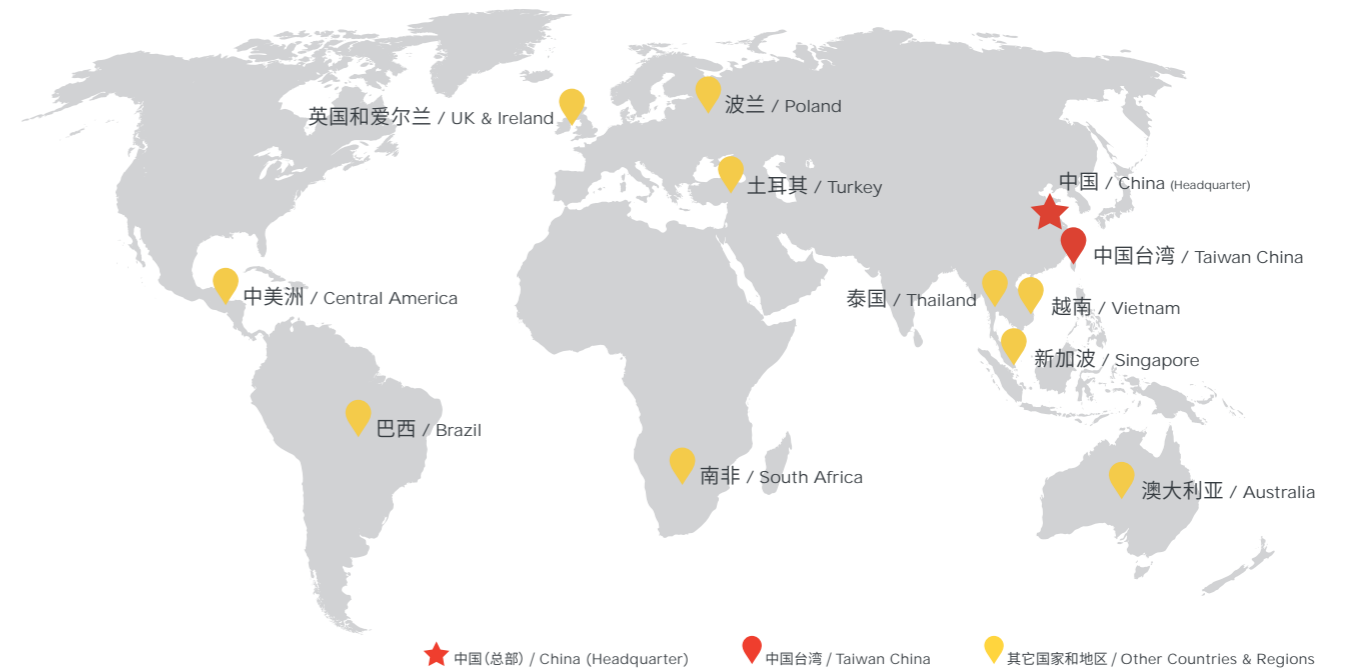
关于我们 ABOUT US

铭客 (Mingke), 专注于环形钢带 - 高强度连续成型模具带的生产制造, 并提供以环形钢带为载体的连续化流程工艺解决方案, 致力于打造细分品类世界级隐形冠军企业。

南京铭客传动系统有限公司是一家专精特新“小巨人”、高新技术、瞪羚企业, 位于南京市, 占地56亩地, 拥有员工100多人。公司核心团队成员来自于浙江大学、厦门大学、大连理工、东南大学、南洋理工等知名高校, 在全球十几个国家拥有销售和服务中心。秉承十多年创新求精和行业经验, 铭客已取得技术专利及荣誉40+项, 并获得了全球众多客户的支持与信任。

Mingke, focuses on the production and manufacturing of high-strength continuous molding belts, and provides continuous process solutions with endless steel belts as carriers, and is committed to creating a world-class hidden champion enterprise in subdivided categories.

Mingke's factory is located in Nanjing, covering an area of 40,000 square meters and has more than 100 employees. Our core team members come from well-known universities such as Zhejiang University, Xiamen University, Dalian University of Technology, Southeast University, and Nanyang Technological University, and we have sales and service centers in more than a dozen countries around the world. Adhering to more than ten years of innovation and industry experience, Mingke has obtained more than 40 technical patents and honors, and has won the support and trust of many customers all around the world.



铭客在全球10+国家和地区有销售和服务中心

Mingke sales and service centers are located in 10+ countries and regions around the world



静等压式双钢带压机

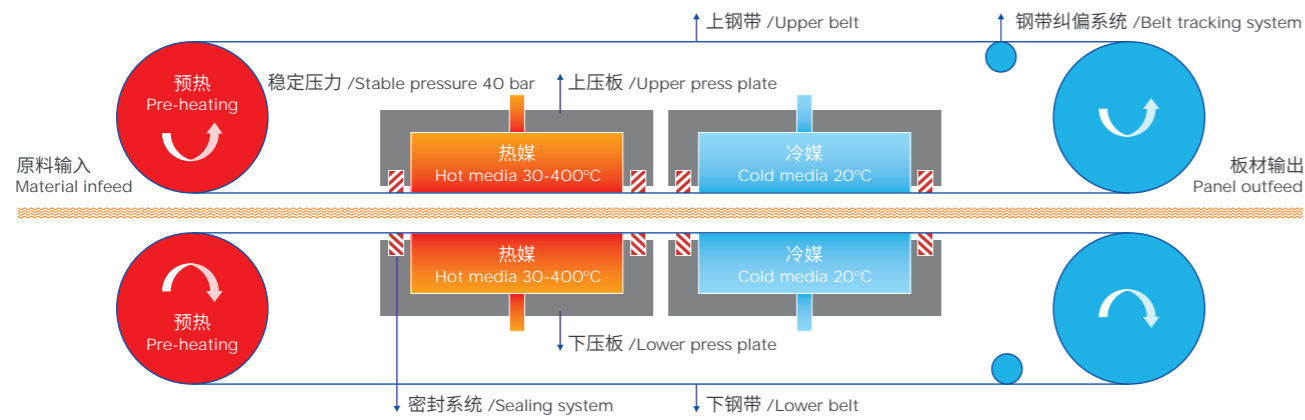
Isobaric Double Belt Press

静等压式双钢带压机是铭客除钢带(模具带)外自主研发生产的一款压机设备。密封系统、钢带(模具带)、热压板形成静等压腔体,通过钢带(模具带)对物料加热加压,由轮毂驱动钢带(模具带)运转,实现连续生产。
2016年,铭客自主研发成功了首台静等压式双钢带压机,并在2020年将该压机加热温度升至400°C。

The isobaric double steel belt press is a press equipment independently developed and produced by Mingke in addition to steel belts (molding belt). Sealing system, steel belt (molding belt) and hot pressing plate consist a static isobaric chamber. The material is heated and pressurized by the steel belt (molding belt) and the steel belts (molding belt) are driven by rollers to achieve continuous production.
In 2016, Mingke successfully developed the first isobaric Double Belt Press (DBP), and in 2020 the heating temperature of the press was.

工作原理图

Working Principle

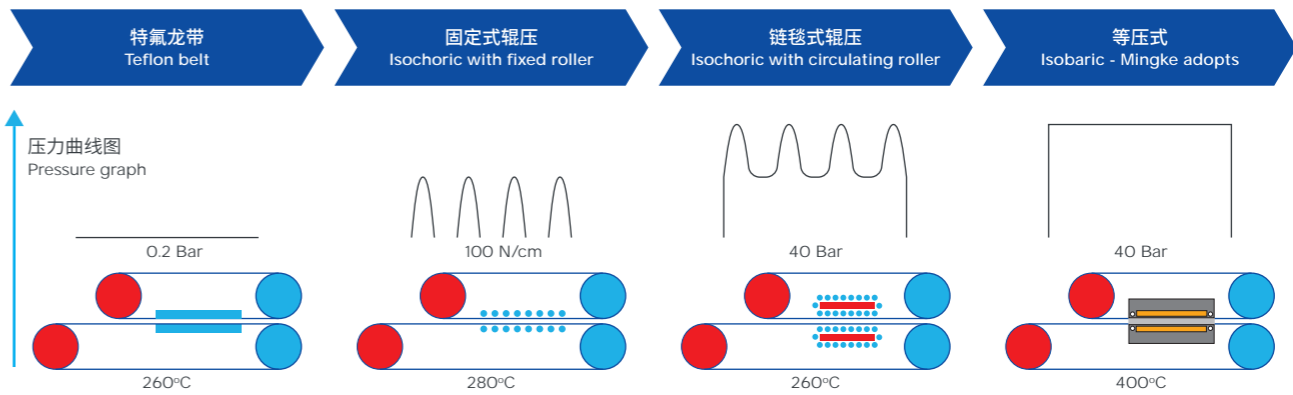


	定厚 Fixed thickness	定压 Constant pressure
工作原理 Working Principle	通过调整钢带间隙 By adjusting the gap of the steel belt	通过调整钢带对制品压力 By adjusting the pressure of the steel belt on the product
压力方式 Pressure Method	特氟龙带、夹辊式、链毯式 Teflon belt, clamping roller, circulating roller	静等压式 Isobaric
机械原理 Mechanism	产品厚度取决于间隙、压力来源于制品进料和出料的压缩比 Product thickness depends on the gap, the pressure comes from the compression ratio of product feeding and discharging	喂料的厚度差异决定了产品的厚度差异、压力连续均等 The thickness difference of the feed determines the thickness of the product, continuous and equal pressure
优点 Advantage	构造简单、制造成本低、厚度实时控制 Simple structure, low manufacturing cost, thickness control timely	高压低压容易控制、可制作超薄制品 (<0.01mm)、物料表面压力一致 Easy to control high pressure and low pressure, can make ultra-thin products, consistent material surface pressure
缺点 Disadvantage	不适合超薄制品生产、产品的内压力差取决于喂料的厚度差异 Not suitable for the production of ultra-thin products, the internal pressure difference of the product depends on the thickness difference of the feed	密封系统精密易损、后期运维成本高 The sealing system is precise and vulnerable, high post operation and maintenance costs



各式压机工作压力及温度差异

Differences of Pressure and Temperature in Various Presses



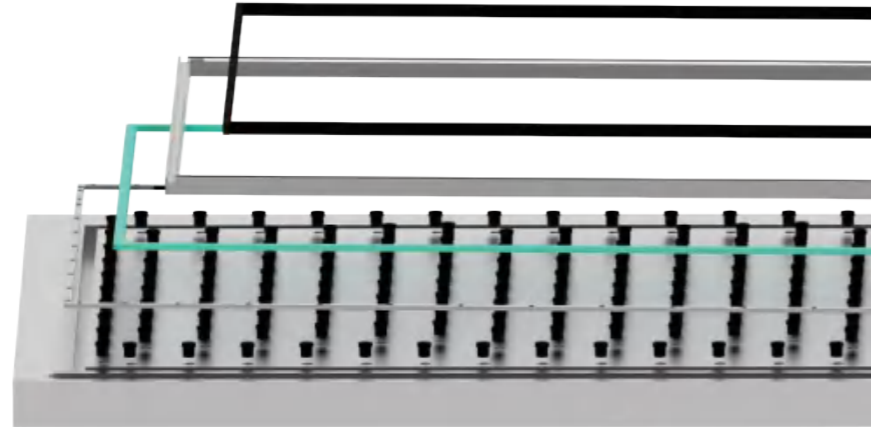
静等压式双钢带压机应用

Applications of Isobaric Double Belt Press

- 复合材料 (纤维、金属、木板、塑料等) Composite materials (fiber, metal, wood, plastic, etc.)
- 三聚氰胺贴面板 CPL
- 柔性覆铜板 FCCL
- 其它 Others
- 同透地板 Homogeneous PVC flooring
- 固态锂电池极片 Solid-state lithium battery electrode sheet
- 氢燃料电池碳纸 Hydrogen fuel cell carbon paper



密封系统 Sealing System



镀铬模具带 Chrome-plated Molding Belt

优势 Advantages

- 耐磨延寿
Wear resistant and extend lifespan
- 耐高温稳定
Temperature resistant and stable
- 防腐护表, 隔绝侵蚀威胁
Anti corrosion and surface protection, isolating the threat of erosion
- 助力脱模, 提升工艺流畅性
Assist in demolding and improve the smoothness of the process



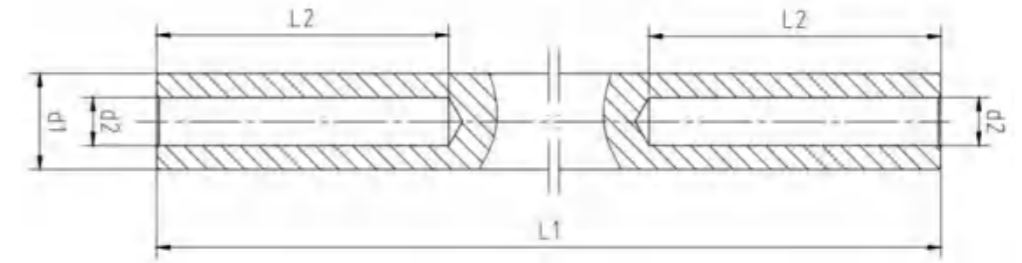
Endless Steel Belt, High Strength Continuous Molding Belt /05

辊杆 Rolling Rods

特点: 在240°C ~ 280°C 高温下长期工作不变形。
Features: no deformation when working at high temperature of 240°C - 280°C for a long time.

规格 Specifications:

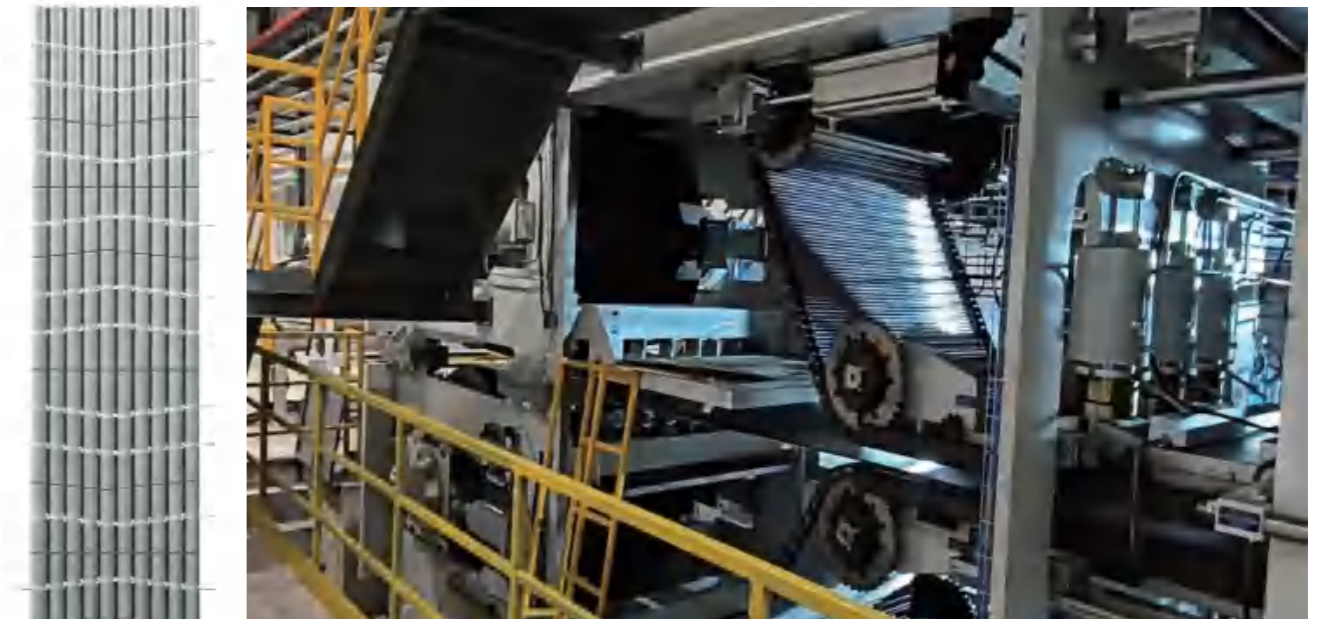
- $d1 = 15 - 22 \text{ mm}$
- $d2 = 5 - 9 \text{ mm}$
- $L1 \leq 3150 \text{ mm}$
- $L2 \leq 175 \text{ mm}$



直线度 Straightness	圆度 Roundness	表面光洁度 Surface finish	表面硬度 Surface hardness	表面淬火处理深度 Surface quenching depth	材质 Material
$< 0.15/1000 \text{ mm}$	$< 0.005 \text{ mm}$	$Ra < 0.4 \mu\text{m}$	HRC 50-55	$> 1.0\text{mm}$	轴承钢 Bearing steel

库斯特压机链毯 Roller Chain for Kusters Press

适配库斯特压机, 可替代原厂配件。
Compatible with Kusters press, replacement accessories of the one from OEM.



环形钢带 - 高强度连续成型模具带 /06

FILM CASTING

薄膜流延行业

薄膜超级镜面模具带

Super Mirror-polished Molding Belts for Film Casting

铭客超级镜面模具带, 无缝环形结构, 整体环形研磨, 对比现场横缝焊接表面一致性更高。

Mingke super mirror polished molding belt, seamless endless structure, overall endless grinding, higher surface consistency compared to on-site transverse seam welding.

薄膜流延应用

Applications for Film Casting

- 聚酰亚胺薄膜 (PI 膜) Polyimide Film (PI)
- 三醋酸纤维素薄膜 (TAC 膜) Cellulose Triacetate Film (TAC)
- 过滤膜 Filter films
- 洗衣凝珠 Laundry pods
- 其他 Others

模具带型号

Molding Belt Model



AT1200



AT1000



MT1650



MT1150

模具带尺寸

Dimension of Molding Belt

- 长度 Length- 可定制 Customizable
- 宽度 Width- 600-4000 mm
- 厚度 Thickness- 0.5-1.8 mm



CERAMIC

陶瓷岩板行业

陶瓷岩板专用模具带 *Molding Belt for Ceramic*

陶瓷岩板模具带上带整体环形研磨, 表面硬度较高, 焊缝与母材一致性较高。

Molding belt upper belt for ceramic is endless grounded in a circular shape as a whole, with high surface hardness and high consistency between the welding seam and the base material.

模具带型号 *Molding Belt Model*



MT1650

模具带尺寸 *Dimension of Molding Belt*

- 长度 Length- 可定制 Customizable
- 宽度 Width- 1500-2500 mm
- 厚度 Thickness- 1.0/1.2 mm



WOOD BASED PANEL INDUSTRY

人造板行业

平压线专用模具带

Molding Belt for Double Belt Press

优质模具带兼具疲劳寿命与硬度的均衡、厚度、直线度、表面光洁度以及导热的优异性能,可在连续生产过程中实现均匀受压,确保板坯密度与板面色泽均匀一致,有效提升板材成品质量。

High quality molding belts have excellent performance in balancing fatigue life and hardness, thickness, straightness, surface smoothness, and thermal conductivity. They can achieve uniform compression during continuous production, ensuring that the density of the slab is consistent with the color of the slab surface, effectively improving the quality of the finished panels.



平压线应用

Applications of Double Belt Press

- 中密度纤维板 Medium Density Fiberboard (MDF)
- 高密度纤维板 High Density Fiberboard (HDF)
- 刨花板 Particle Board (PB)
- 定向刨花板 Oriented Structural Board (OSB)
- 单板层积材 Laminated Veneer Lumber (LVL)
- 其他 Others

模具带型号

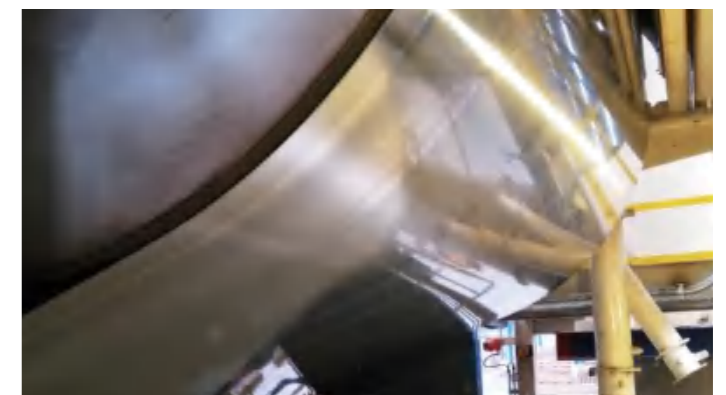
Molding Belt Model

MT MT1650

模具带尺寸

Dimension of Molding Belt

- 长度 Length- 可定制 Customizable
- 宽度 Width- 1400-3400 mm
- 厚度 Thickness- 2.0-3.5 mm



辊压线专用模具带

Molding Belt for Mende Press

人造板辊压线专用模具带,具备高强度及优异的疲劳强度性能,确保持续稳定运行,提升板材品质与生产线效率。

Special molding belts for wood based panel Mende press line, with high strength and excellent fatigue strength performance, ensures continuous and stable operation, improves board quality and production line efficiency.

辊压线应用

Application of Mende Press

- 中密度板薄板 Thin Medium Density Fiberboard (MDF,1-8mm)

模具带尺寸

Dimension of Molding Belt

- 长度 Length- 可定制 Customizable
- 宽度 Width- 1400-3400 mm
- 厚度 Thickness- 1.8-2.5 mm

模具带型号

Molding Belt Model



MT1650

单层压机专用模具带

Molding Belts for Single Opening Press

模具带承载板坯平稳进入压机热压区域,同时均匀传递热量与压力,确保板材密度一致、表面平整光洁。

The molding belts carries the slab smoothly into the hot pressing area of the press, while uniformly transferring heat and pressure to ensure consistent density and smooth surface of the panels.

单层压机应用

Application of Single Opening Press

- 刨花板 Particle Board (PB)

模具带尺寸

Dimension of Molding Belt

- 长度 Length- 可定制 Customizable
- 宽度 Width- 1400-3400 mm
- 厚度 Thickness- 1.2-1.5 mm

模具带型号

Molding Belt Model



CT1320



CT1100L



RUBBER INDUSTRY

橡胶行业

鼓式硫化机专用模具带 *Molding Belt for Rotocure*

鼓式硫化机是一种可连续硫化的专用设备。铭客高强度环形模具带在硫化过程中起到传递压力和热量的作用,是确保产品质量的重要部件。

Rotocure is a specialized equipment that can continuously vulcanize rubber. Mingke high strength endless molding belt plays a role in transferring pressure and heat during the vulcanization process, and is an important component to ensure product quality.



鼓硫应用

Applications of Rotocure

- 橡胶板、片 Rubber sheets
- 橡胶带制品 Rubber belts
- 同透地板 Homogeneous PVC flooring
- 橡胶输送带 Rubber conveyor belt
- 橡胶内衬 Rubber lining
- 防水材料 Waterproof material
- 印刷橡皮布 Printing mackintosh
- 其他 Others

模具带尺寸

Dimension of Molding Belt

- 长度 Length- 可定制 Customizable
- 宽度 Width- 600-6000 mm
- 厚度 Thickness- 0.6-2.3 mm

模具带型号

Molding Belt Model



FOOD INDUSTRY

食品行业

隧道烤炉专用模具带 Molding Belt for Bakery Oven

应用 Applications

- 饼干 Biscuits
- 曲奇饼 Cookies
- 瑞士卷 Swiss roll
- 薯片 Potato chips
- 蛋黄酥 Egg yolk pastry
- 甜点 Sweeties
- 膨化米饼 Expanding rice cakes
- 夹心蛋糕 Sandwich cakes
- 小馒头 Small steamed buns
- 绿豆饼 Mung Bean Cake
- 其他 Others

模具带型号 Molding Belt Model

CT CT1100

模具带尺寸 Dimension of Molding Belt

- 长度 Length- 可定制 Customizable
- 宽度 Width- 600-2000 mm
- 厚度 Thickness- 0.6-1.4 mm

单冻机专用模具带 Molding Belt for IQF

模具带型号 Molding Belt Model

AT AT1200

模具带尺寸 Dimension of Molding Belt

- 长度 Length- 可定制 Customizable
- 宽度 Width- 600-2000 mm
- 厚度 Thickness- 0.8-1.4 mm

巧克力专用模具带 Molding Belts for Chocolate

模具带型号 Molding Belt Model

CT CT1320 **CT** CT1100L

模具带尺寸 Dimension of Molding Belt

- 长度 Length- 可定制 Customizable
- 宽度 Width- 300-1000 mm
- 厚度 Thickness- 0.4-0.8 mm

酿造蒸煮线专用模具带 Molding Belt for Brewing & Steaming

采用冲孔模具带，有不同冲孔规格可供选择。
Perforated molding belts, different perforation patterns for option.

模具带型号 Molding Belt Model

AT AT1200

模具带尺寸 Dimension of Molding Belt

- 长度 Length- 可定制 Customizable
- 宽度 Width- 600-1500 mm
- 厚度 Thickness- 0.8-1.2 mm



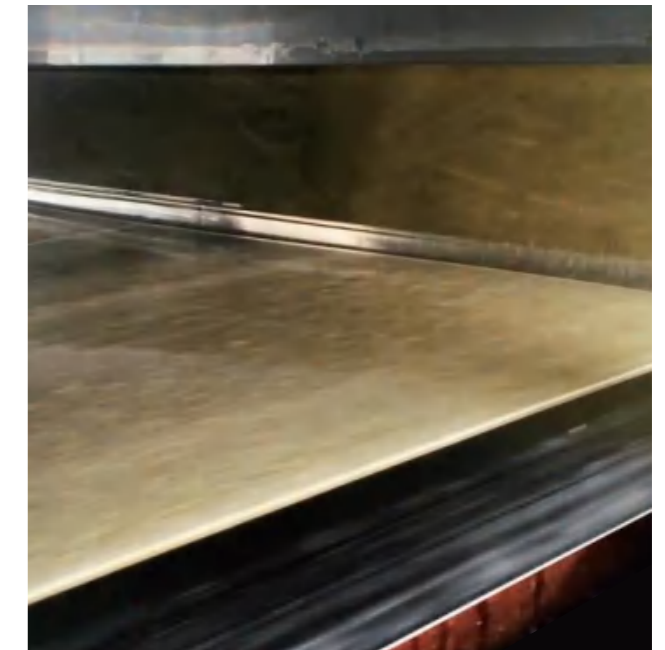
CHEMICAL INDUSTRY

化工行业

造粒机、结片机专用模具带 Molding Belts for Pastillator and Flaker

铭客模具带广泛应用于化工造粒及结片冷却系统, 包括单/双钢带造粒机、结片机。

Mingke molding belts are widely used in chemical granulation and flakes cooling systems, including single/double steel belt pastillators and flaking machines.



造粒机应用 Applications of Pastillator

- 硫磺 Sulphur
- 石蜡 Paraffin
- 树脂 Resin
- 沥青 Asphalt
- 顺酐 Maleic anhydride
- 热熔胶 Hot melt glue
- 其他 Others

结片机应用 Applications of Flaker

- 聚酯树脂 Polyester resin
- 环氧树脂 Epoxy resin
- 碳氢树脂 Hydrocarbon resin (C5/C9)
- 酚醛树脂 Phenolic resin
- 丙烯酸树脂 Acrylic resin
- 沥青 Asphalt
- 其他 Etc

模具带型号 Molding Belt Model

- **AT** AT1200
- **AT** AT1000
- **DT** DT980
- **MT** MT1150

模具带尺寸 Dimension of Molding Belt

- 长度 Length- 可定制 Customizable
- 宽度 Width- 600-3000 mm
- 厚度 Thickness- 0.5-1.2 mm

化工结片机

Chemical Flaking Machine

结片机应用

Applications of Flaker

- 石油化工与基本化工类：硫磺、沥青、石油树脂 (C5/C9)、石蜡、氯化石蜡、顺酐、氯乙酸、氯化钙等。
 - 高分子材料与复合材料：几乎覆盖所有常见树脂，如聚酯、环氧、酚醛、丙烯酸、碳氢树脂等。
 - 精细化工与助剂：硬脂酸及硬脂酸盐、防老剂、热熔胶、松香等。
 - 制药、日化与食品：适用于熔点范围内的制药中间体、脂肪酸、食品添加剂 (如胶基)、乳化炸药等。
 - 环保与新材料：处理废盐及结晶硫酸铝、复合肥料等。
- Petrochemical and basic chemical industries: sulfur, asphalt, petroleum resin (C5/C9), paraffin, chlorinated paraffin, maleic anhydride, chloroacetic acid, calcium chloride, etc.
- Polymer materials and composite materials: almost covering all common resins, such as polyester, epoxy, phenolic, acrylic, hydrocarbon resins, etc.
- Fine chemicals and additives: stearic acid and its salts, anti-aging agents, hot melt adhesives, rosin, etc.
- Pharmaceutical, daily chemical and food: applicable to pharmaceutical intermediates, fatty acids, food additives (such as gum bases), emulsion explosives, etc. within the melting point range.
- Environmental protection and new materials: processing waste salt and crystalline aluminum sulfate, compound fertilizer, etc.

单钢带结片机

Single Steel Belt Flaker

熔融状态的物料不断的从布料器中溢出,在钢带表面形成薄层并受到钢带背面的冷却水均匀冷却,利用钢带自身优良的热传导特性,使得熔融物料在钢带输送过程中固化成固体料片。固体料片被下料刮刀从钢带上刮下由破碎机破碎到设定的尺寸。

The molten material continuously overflows from the feeder, forming a thin layer on the surface of the steel belt and being uniformly cooled by the cooling water on the back of the belt. By utilizing the excellent thermal conductivity of the steel belt itself, the molten material solidifies into solid pieces during the steel belt transportation process. The solid material is scraped off from the belt by the cutting scraper and crushed to the set size by the crusher.



Endless Steel Belt, High Strength Continuous Molding Belt /21

双钢带结片机

Double Steel Belt Flaker

液态物料溢流在运行中的下钢带表面上,形成薄片,物料在上下两层钢带间受到冷却水的均匀冷却,用钢带自身优良的热传递特性,使得熔融物料在钢带输送过程中固化成固体料片。固体料片被下料刮刀从钢带上刮下由破碎机破碎到设定的尺寸。

The liquid material overflows on the surface of the running lower steel belt, forming a thin sheet. The material is uniformly cooled by cooling water between the upper and lower steel belts, and the excellent heat transfer characteristics of the steel belt itself solidify the molten material into solid sheets during the belt transportation process. The solid material is scraped off from the steel belt by the cutting scraper and crushed to the set size by the crusher.



化工造粒机

Chemical Pastillating Machine

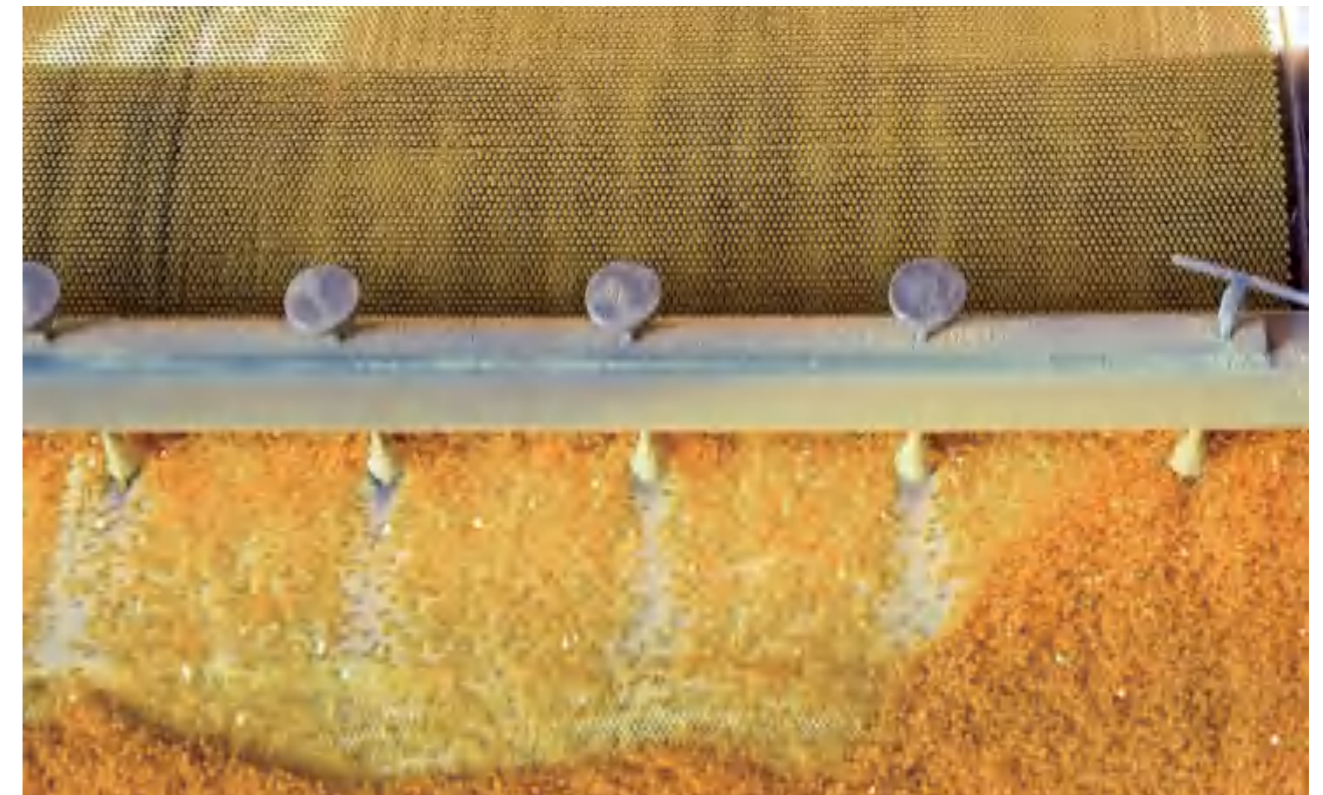
钢带式冷却造粒机,通过造粒装置甩出颗粒至与冷媒(水)接触的不锈钢钢带上,冷却凝固成粒、片、块状的固体物料,产品形式为半球状、条状、片状。

The steel belt cooling pastillator ejects particles through the granulation device onto a stainless steel belt in contact with the coolant (water), where they cool and solidify into granular, flake, or block-shaped solid materials, with product forms including hemispherical, rod-shaped, and flake-shaped.

造粒机应用

Applications of Pastillator

- 石油化工类：硫磺、石蜡、石油树脂 (C5/C9树脂)、沥青、顺酐、硬脂酸等。
 - 精细化工类：橡胶/塑料助剂 (防老剂、光稳定剂)、热熔胶、抗氧化剂、间苯二胺、环氧树脂等。
 - 环保与资源回收：工业粉尘 (粉煤灰、冶金烟尘)、硫化氢、乳化炸药等特殊物料。
 - 医药与食品工业：蜂蜡等药用辅料、巧克力、营养强化剂。
 - 新材料与新能源：石蜡、聚酰胺树脂等相变材料、PVDF基材料。
- Petrochemical industry: sulfur, paraffin, petroleum resin (C5/C9 resin), asphalt, maleic anhydride, stearic acid, etc.
- Fine chemicals: rubber/plastic additives (anti-aging agents, light stabilizers), hot melt adhesives, antioxidants, meta phenylenediamine, epoxy resins, etc.
- Environmental protection and resource recycling: special materials such as industrial dust (fly ash, metallurgical dust), sodium hydrosulfide, emulsion explosives, etc.
- Pharmaceutical and food industries: beeswax and other medicinal excipients, chocolate, nutritional fortifiers.
- New materials and new energy: phase change materials such as paraffin wax and polyamide resin, PVDF based materials.



环形钢带 - 高强度连续成型模具带 /22

MOLDING BELTS FOR OTHER APPLICATIONS

其他用途模具带



复合材料
Composite Material

推荐使用模具带
Recommended Molding Belt: MT1650



氢燃料电池碳纸
Hydrogen Fuel Cell Carbon Paper

推荐使用模具带
Recommended Molding Belt: MT1650



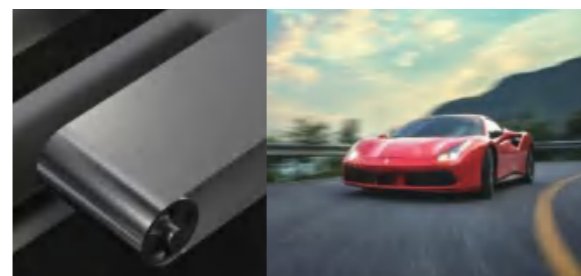
烟草
Tobacco

推荐使用模具带
Recommended Molding Belt: MT1650



人造石
Artificial Stone

推荐使用模具带
Recommended Molding Belt: MT1650



汽车工业的风洞分析、轮胎试验、车辆设计等试验
Automotive Industry for wind tunnel analysis, tire testing, vehicle design testing, etc.

推荐使用模具带
Recommended Molding Belt: MT1650



造纸业
Papermaking

推荐使用模具带
Recommended Molding Belt: MT1650



印刷
Printing

推荐使用模具带
Recommended Molding Belt: MT1650



平板硫化机专用钢板
Steel Plate for Plate Vulcanizer

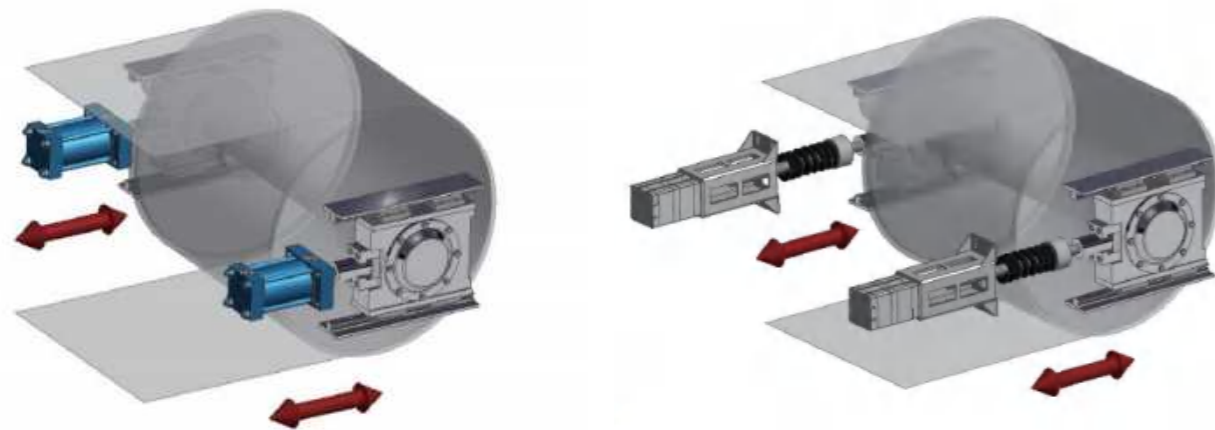
推荐使用模具带
Recommended Molding Belt: MT1650

模具带纠偏系统 Molding Belt Tracking Systems

我们提供以下纠偏解决方案,以应对于不同行业的需求。

We can provide different steel belt tracking systems for different industries.

纠偏系统 Tracking System	紧凑推杆型 自动纠偏 MKCBT Compact Putter Tracking Device - MKCBT	气缸型 自动纠偏 MKPAT Pneumatic Tracking Device - MKPAT	紧凑电机型 自动纠偏 MKAT Compact Motor Tracking Device - MKAT	液压型 自动纠偏 MKHST Hydraulic Tracking Device - MKHST	电缸型 自动纠偏 MKEMC Electromechanical Cylinder Tracking Device - MKEMC
模具带检测信号 Molding belt inspection signal	开关量 Discrete signal	开关量 Discrete signal	模拟量 Analog quantity	模拟量 Analog quantity	模拟量 Analog quantity
驱动 Drive	电动 Electric	气动 Pneumatic	电动 Electric	液压 Hydraulic	电动 Electric
模具带边沿 Molding belt edge	非接触式 Non-contact	非接触式 Non-contact	接触式 Contact-type	接触式 Contact-type	非接触式 Non-contact
模具带张力范围 Tension range of molding belt	5-25KN	20-60KN	5-100KN	200-500KN	20-60KN
纠偏精度 Tracking accuracy	±10mm	±10mm	±10mm	±5mm	±0.5mm
应用 Applications	隧道烤炉、 食品冷冻、 Tunnel oven, Food freezing	化工冷却机、 食品冷冻 Chemical cooling machine, Food freezing	隧道烤炉、 食品冷冻、 化工行业 Tunnel oven, Food freezing, Chemical industry	薄膜流延、 双钢带压机 Film casting, Double belt press	印刷行业 Printing industry
系统价格 System price	★	★★	★★★	★★★★	★★★★★



配件 Accessories



1. 石墨条

1. Graphite Bar



2. 清洁刷

2. Cleaning Brush



3. 托架

3. Bracket



4. V 胶条

4. Rubber V Ropes



5. 焊丝

5. Welding Wire / Rod



6. 挖补片

6. Disc Patches

模具带服务 Molding Belt Services



横向焊接 Cross Welding



粘贴 V 形胶条 V-rope Bonding



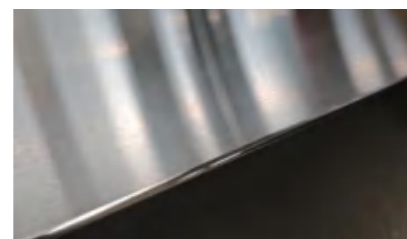
快速补挖 Disc Patching



喷丸 Shot Peening



裂纹修复 Crack Repairing



修圆角 Edge Rounding

铭客模具带型号及主要性能参数

MINGKE Molding Belt Model & Main Specifications

钢材类型 Type of steel	马氏体不锈钢 Martensitic stainless steel		奥氏体不锈钢 Austenitic stainless steel		双相超耐腐蚀不锈钢 Duplex super corrosion resistant stainless steel	碳钢 Carbon steel		
型号 Model	MT1650	MT1150	AT1200	AT1000	DT980	CT1100	CT1100L	CT1320
抗拉强度 (Mpa) Tensile strength (Mpa)	1600	1150	1200	1000	980	950	1100	1210
屈服强度 (Mpa) Yield strength (Mpa)	1550	1100	980	780	790	850	1050	1050
疲劳强度 (Mpa) ⁽¹⁾ Fatigue strength (Mpa)	±630	±500	±470	±400	±380	±460	±380	±430
硬度 (HV ₅) Hardness (HV ₅)	480	380	360	320	306	270	460	360
延伸率 % Elongation %	5	7	20	6	10	8.5	9	10
焊接系数 Welding factor	0.80	0.95	0.70	0.70	0.65	0.89	0.73	0.9

⁽¹⁾ 测试样品的 50% 可以承受 2,000,000 次负荷循环。

⁽²⁾ 50% of the test specimen withstand a minimum of 2*10⁶ load cycles.

* 本资料中数据虽具代表性但并不受到绝对保证。数据亦会因所用材料不同而改变。

* The information and data presented in this data sheet are typical values, but not guaranteed. The information may be subjected to changes in material, properties and/or performance.

