

铭客 (Mingke),  
专精特新“小巨人”企业,  
专注于环形钢带 - 高强度连续成型模具带的生产制造,  
并提供以环形钢带为载体的连续化流程工艺解决方案。  
铭客在中国、中国台湾、波兰、土耳其、泰国、  
澳大利亚、越南、巴西等全球10+国家和地区有销售和服务中心。

MINGKE  
National "Specialised, Refined, Distinctive and Innovative" "Little Giant"  
Enterprise, specialized in endless steel belt, high strength continuous  
molding belt and providing continuous process solutions based on  
endless steel belt.  
Our sales and service centers are located in 10+ countries  
and regions around the world, such as China, Taiwan  
China, Poland, Turkey, Thailand, Australia,  
Vietnam, Brazil and so on.

#### 南京铭客传动系统有限公司

电话: +86 25-56806003  
邮箱: marketing@mingkebelt.com  
地址: 南京市高淳经济开发区桃园北路 50 号, 邮编 211316

#### Nanjing Mingke Process Systems Co.,Ltd.

Tel: +86 25-56806003  
Email: sales@mingkebelt.com  
Add: No. 50 North Taoyuan Rd., Gaochun Economic Dvpt. Zone,  
Nanjing City, Jiangsu Prov. 211316, China

#### 上海办事处

电话: +86 189 1597 9385  
地址: 上海市青浦区诸光路 1588 弄虹桥世界中心 E2 栋 312 室

#### Shanghai Office

Tel: +86 189 1597 9385  
Add: Rm. 312, 3th Floor, Bldg. E2, Hongqiao World Center,  
Lane 1588, Zhuguang Rd., Qingpu Dist., Shanghai 201799, China

#### 广州办事处

电话: +86 189 1597 9385  
地址: 广州市番禺区石楼镇石清公路 78 号 (中创云谷) A 栋 512 室

#### Guangzhou Office

Tel: +86 189 1597 9385  
Add: Rm 512, Building A, Zhongchuang Yungu, No. 78 Shiqing Rd.,  
Shilou Town, Panyu Dist., Guangzhou City, Guangdong Prov., China

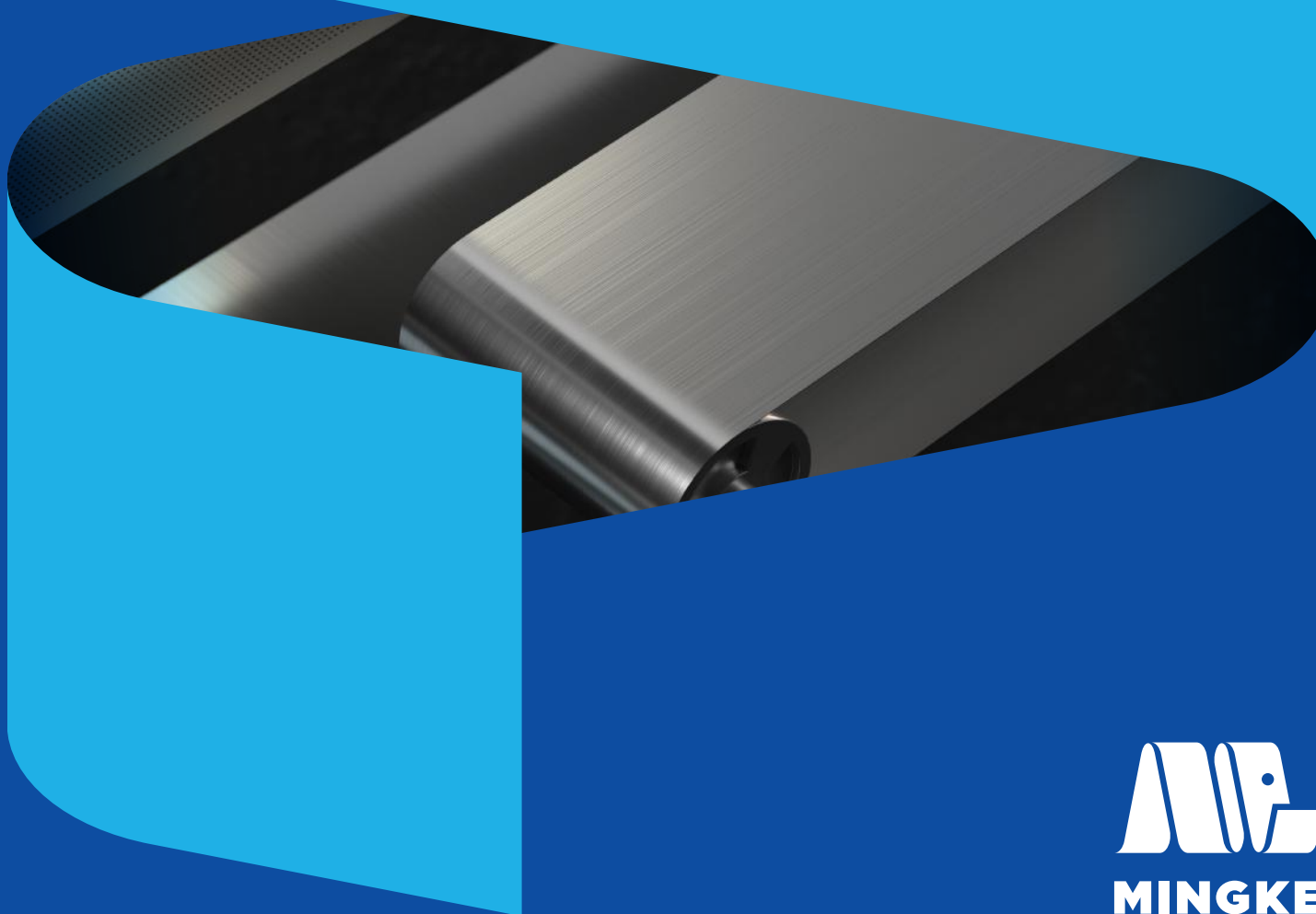
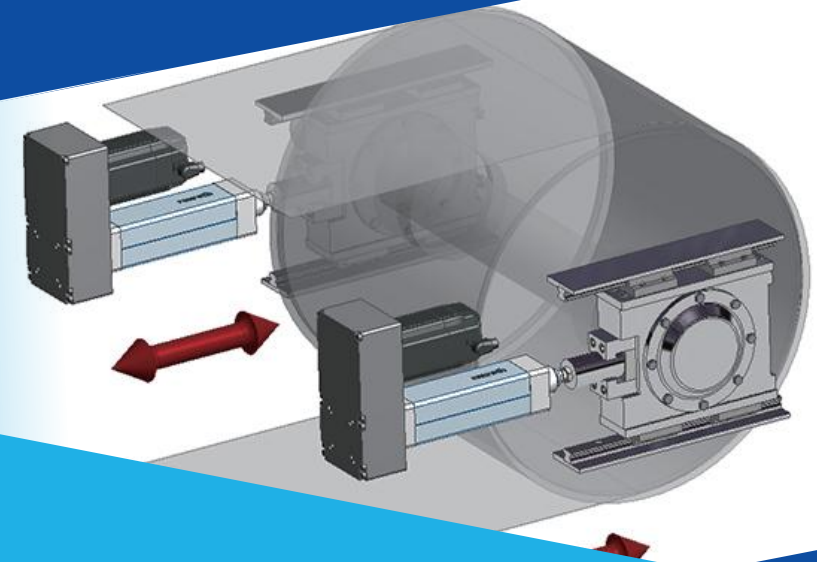
#### 波兰售后服务中心

#### After-sale Service Center in Poland

Wilhelm Herm. Müller Polska Sp z o.o.  
Add: 85-862 Bydgoszcz, ul. Solna 20, Poland

[www.mingkebelt.com](http://www.mingkebelt.com)

## 模具带纠偏系统 MOLDING BELT TRACKING SYSTEMS

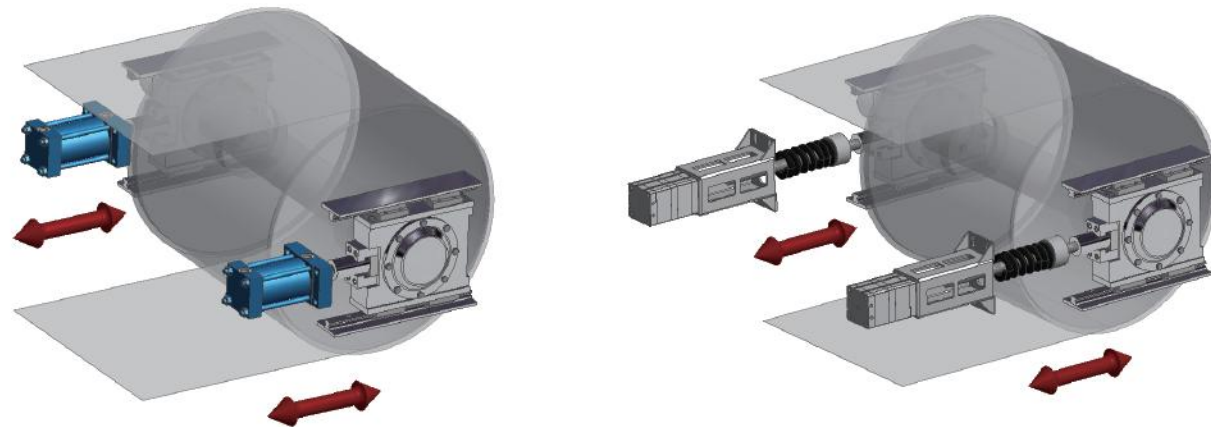


## 模具带纠偏系统 Molding Belt Tracking Systems

我们提供以下纠偏解决方案，以应对于不同行业的需求。

We can provide different steel belt tracking systems for different industries.

纠偏系统 Tracking System	紧凑推杆型 自动纠偏 MKCBT Compact Putter Tracking Device - MKCBT	气缸型 自动纠偏 MKPAT Pneumatic Tracking Device - MKPAT	紧凑电机型 自动纠偏 MKAT Compact Motor Tracking Device - MKAT	液压型 自动纠偏 MKHST Hydraulic Tracking Device - MKHST	电缸型 自动纠偏 MKEMC Electromechanical Cylinder Tracking Device - MKEMC
模具带检测信号 Molding belt inspection signal	开关量 Discrete signal	开关量 Discrete signal	模拟量 Analog quantity	模拟量 Analog quantity	模拟量 Analog quantity
驱动 Drive	电动 Electric	气动 Pneumatic	电动 Electric	液压 Hydraulic	电动 Electric
模具带边沿 Molding belt edge	非接触式 Non-contact	非接触式 Non-contact	接触式 Contact-type	接触式 Contact-type	非接触式 Non-contact
模具带张力范围 Tension range of molding belt	5-25KN	20-60KN	5-100KN	200-500KN	20-60KN
纠偏精度 Tracking accuracy	±10mm	±10mm	±10mm	±5mm	±0.5mm
应用 Applications	隧道烤炉、 食品冷冻、  Tunnel oven, Food freezing	化工冷却机、 食品冷冻  Chemical cooling machine, Food freezing	隧道烤炉、 食品冷冻、 化工行业  Tunnel oven, Food freezing, Chemical industry	薄膜流延、 双钢带压机  Film casting, Double belt press	印刷行业  Printing industry
系统价格 System price	★	★★	★★★	★★★★	★★★★★



## 模具带服务 Molding Belt Services

