



南京铭客传动系统有限公司

电话: +86 25-56806003
邮箱: marketing@mingkebelt.com
地址: 南京市高淳经济开发区桃园北路 50 号, 邮编 211316

Nanjing Mingke Process Systems Co.,Ltd.

Tel: +86 25-56806003
Email: sales@mingkebelt.com
Add: No. 50 North Taoyuan Rd., Gaochun Economic Dvpt. Zone,
Nanjing City, Jiangsu Prov. 211316, China

上海办事处

电话: +86 189 1597 9385
地址: 上海市青浦区诸光路 1588 弄虹桥世界中心 E2 栋 312 室

Shanghai Office

Tel: +86 189 1597 9385
Add: Rm. 312, 3th Floor, Bldg. E2, Hongqiao World Center,
Lane 1588, Zhuguang Rd., Qingpu Dist., Shanghai 201799, China

广州办事处

电话: +86 189 1597 9385
地址: 广州市番禺区石楼镇石清公路 78 号 (中创云谷) A 栋 512 室

Guangzhou Office

Tel: +86 189 1597 9385
Add: Rm 512, Building A, Zhongchuang Yungu, No. 78 Shiqing Rd.,
Shilou Town, Panyu Dist., Guangzhou City, Guangdong Prov., China

波兰售后服务中心

After-sale Service Center in Poland

Wilhelm Herm. Müller Polska Sp z o.o.
Add: 85-862 Bydgoszcz, ul. Solna 20, Poland

www.mingkebelt.com



南京铭客传动系统有限公司
Nanjing Mingke Process Systems Co.,Ltd.



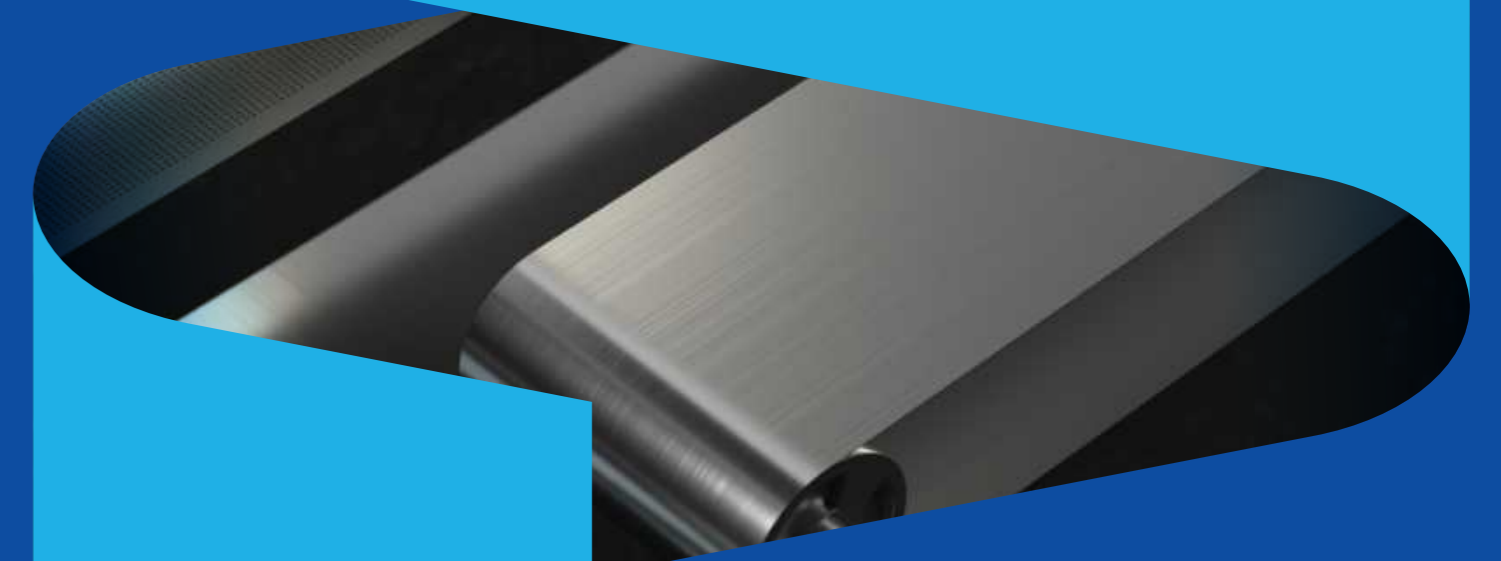
铭客 (Mingke),
专精特新“小巨人”企业,
专注于环形钢带 - 高强度连续成型模具带的生产制造,
并提供以环形钢带为载体的连续化流程工艺解决方案。
铭客在中国、中国台湾、波兰、土耳其、泰国、
澳大利亚、越南、巴西等全球10+国家和地区有销售和服务中心。

MINGKE

National "Specialised, Refined, Distinctive and Innovative" "Little Giant"
Enterprise, specialized in endless steel belt, high strength continuous
molding belt and providing continuous process solutions based on
endless steel belt.

Our sales and service centers are located in 10+ countries
and regions around the world, such as China, Taiwan
China, Poland, Turkey, Thailand, Australia,
Vietnam, Brazil and so on.

食品行业
FOOD INDUSTRY



隧道烤炉专用模具带

Molding Belt for Bakery Oven

应用

Applications

- 饼干 Biscuits
- 曲奇饼 Cookies
- 瑞士卷 Swiss roll
- 薯片 Potato chips
- 蛋黄酥 Egg yolk pastry
- 甜点 Sweeties
- 膨化米饼 Expanding rice cakes
- 夹心蛋糕 Sandwich cakes
- 小馒头 Small steamed buns
- 绿豆饼 Mung Bean Cake
- 其他 Others

模具带型号

Molding Belt Model

CT CT1100

模具带尺寸

Dimension of Molding Belt

- 长度 Length- 可定制 Customizable
- 宽度 Width- 600-2000 mm
- 厚度 Thickness- 0.6-1.4 mm

单冻机专用模具带

Molding Belt for IQF

模具带型号

Molding Belt Model

AT AT1200

模具带尺寸

Dimension of Molding Belt

- 长度 Length- 可定制 Customizable
- 宽度 Width- 600-2000 mm
- 厚度 Thickness- 0.8-1.4 mm

巧克力专用模具带

Molding Belts for Chocolate

模具带型号

Molding Belt Model

CT CT1320 **CT** CT1100L

模具带尺寸

Dimension of Molding Belt

- 长度 Length- 可定制 Customizable
- 宽度 Width- 300-1000 mm
- 厚度 Thickness- 0.4-0.8 mm

酿造蒸煮线专用模具带

Molding Belt for Brewing & Steaming

采用冲孔模具带，有不同冲孔规格可供选择。
Perforated molding belts, different perforation patterns for option.

模具带型号

Molding Belt Model

AT AT1200

模具带尺寸

Dimension of Molding Belt

- 长度 Length- 可定制 Customizable
- 宽度 Width- 600-1500 mm
- 厚度 Thickness- 0.8-1.2 mm



配件

Accessories



1. 石墨条

1. Graphite Bar



3. 托架

3. Bracket



5. 焊丝

5. Welding Wire / Rod



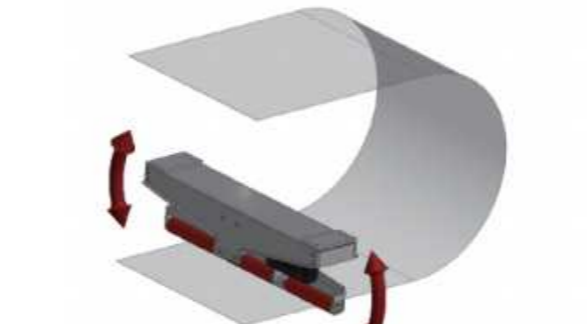
2. 清洁刷

2. Cleaning Brush



4. V 胶条

4. Rubber V Ropes



6. 纠偏系统

6. Tracking Systems

模具带服务

Molding Belt Services



横向焊接 Cross Welding



粘贴 V 形胶条 V-rope Bonding



快速补挖 Disc Patching



喷丸 Shot Peening



裂纹修复 Crack Repairing



修圆角 Edge Rounding

模具带型号及主要性能参数

Molding Belt Model & Main Specifications

指标 Index	钢材类型	奥氏体不锈钢		碳钢钢带	
	Type of steel	Austenitic stainless steel		Carbon steel belt	
型号 Model		AT1200	CT1100	CT1100L	CT1320
抗拉强度 (Mpa) Tensile strength (Mpa)		1200	950	1100	1210
屈服强度 (Mpa) Yield strength (Mpa)		980	850	1050	1050
硬度 (HV _s) Hardness (HV _s)		360	270	460	360
延伸率 % Elongation %		20	8.5	9	10
焊接系数 Welding factor		0.70	0.89	0.73	0.9

* 本资料中数据虽具代表性但并不受到绝对保证。数据亦会因所用材料不同而改变。
* The information and data presented in this data sheet are typical values, but not guaranteed. The information may be subjected to changes in material, properties and/or performance.