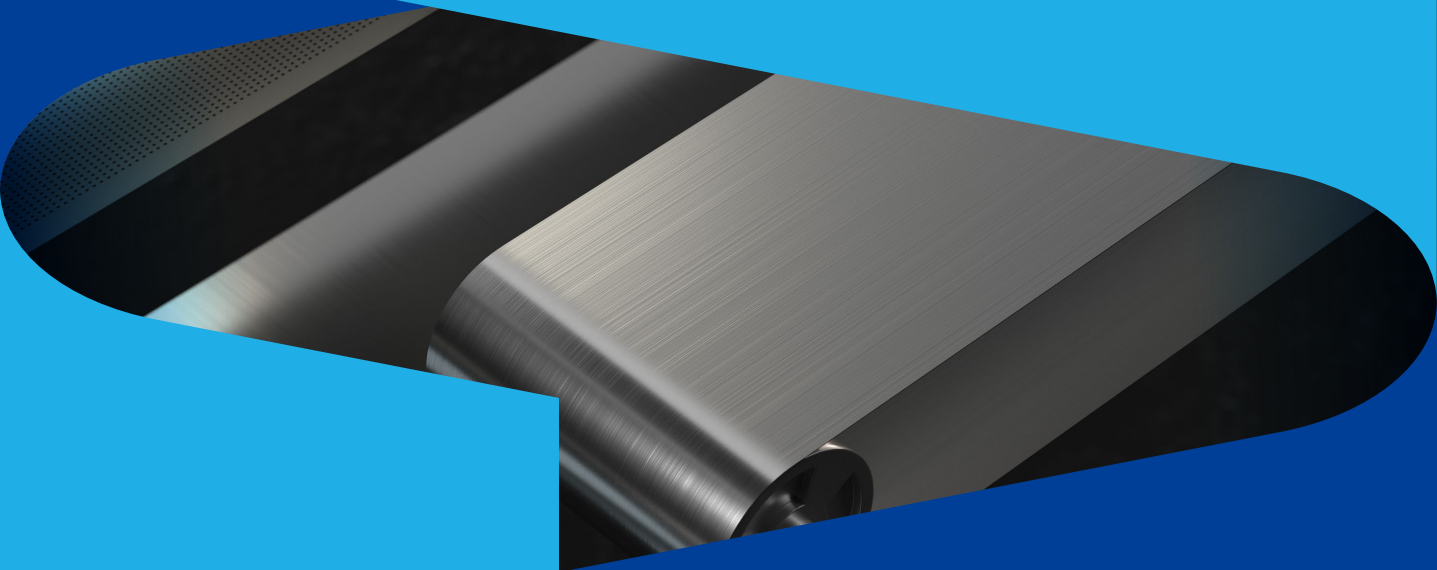




FOOD INDUSTRY
食品行业





隧道式烘焙烤炉、单冻机
专用钢带

*Steel Belts for
Tunnel Bakery Oven and IQF*

铭客钢带广泛应用于隧道式烘焙烤炉、
单冻机等设备。

Mingke belts are widely applied to tunnel
bakery oven and IQF.

隧道式烘焙烤炉专用钢带

Steel Belts for Tunnel Bakery Oven

隧道式烘焙烤炉分多种,其中有钢带式隧道烤炉。钢带烤炉采用回火硬化的碳钢钢带作为传送带。

我们可以为钢带烤炉提供标准钢带和开孔钢带两种不同形式的钢带。铭客碳钢带使用寿命长(10-20年),坚硬耐磨的钢带表面保证了产品的质量,钢带的平整不变形保证了产量最大化。

There are three different types of tunnel bakery ovens, one of which is steel belt type tunnel bakery oven. Steel belt oven adopts temper hardened carbon steel belt as conveyor.

For bakery oven, Mingke can provide standard solid steel belt and perforated steel belt. Our belts have long lifespan (10-20 years). Its hard and wear-resistant surface ensures the quality of the products, and its flat and undistorted characteristics ensure the maximum production capacity.

烤炉应用

Applications of Bakery Oven

- 饼干 Biscuits
- 曲奇饼 Cookies
- 瑞士卷 Swiss roll
- 薯片 Potato chips
- 蛋黄派 Egg pies
- 甜点 Sweeties
- 膨化米饼 Expanding rice cakes
- 夹心蛋糕 Sandwich cakes
- 小馒头 Small steamed buns
- 肉松饼 Shredded pork puff
- 手撕面包 (Steamed) bread
- 其他 Others

钢带型号

Steel Belt Model



CT1300



CT1100

钢带尺寸

Dimension of Steel Belt

- 长度 Length- ≤150 m/pc
- 宽度 Width- 600-1500 mm
- 厚度 Thickness- 0.8/1.2/1.4 mm

单冻机专用钢带

Steel Belts for IQF

隧道式单体速冻机,简称单冻机,广泛应用于食品速冻领域,其中一种为配备不锈钢钢带式的钢带单冻机,主要用于零下40-50°C条件下水产品(如各种鱼片、鱼段、虾类、扇贝类)以及其他软质物料的快速冻结。

对于钢带型单冻机,铭客不仅可以供应钢带,而且可以提供钢带纠偏解决方案,包括V型橡胶条和机械纠偏两种方案。

Tunnel type individual quick freezer, so called IQF, is widely applied in the field of food quick-freezing. There are many kinds of IQFs, one of which is the IQF equipped with flat stainless steel belt, which is mainly used for -40~-50°C sea food products (like various fish fillets, fish sections, shrimps and scallop, etc.) and other soft materials quick-freezing.

For steel belt type IQF, Mingke can not only supply steel belts, but also provide steel belt true tracking solutions, including V-shaped rubber ropes and mechanical tracking solutions.

钢带型号

Steel Belt Model



AT1200



AT1000



MT1050

钢带尺寸

Dimension of Steel Belt

- 长度 Length- ≤150 m/pc
- 宽度 Width- 600-6000 mm
- 厚度 Thickness- 1.0/1.2 mm



其他用途钢带

Steel Belts for Other Applications

巧克力生产线

Chocolate Production Line

推荐使用钢带

Recommended Steel Belt: AT1200 / MT1050 / CT1300



肉类输送

Meat Conveyor

推荐使用钢带

Recommended Steel Belt: AT1200



蔬果干燥机

Drier For Fruit And Vegetables

采用冲孔钢带, 有不同冲孔规格可供选择。

Perforated belts, different perforation patterns for option.

推荐使用钢带

Recommended Steel Belt: AT1200 / DT980



单板冷冻机

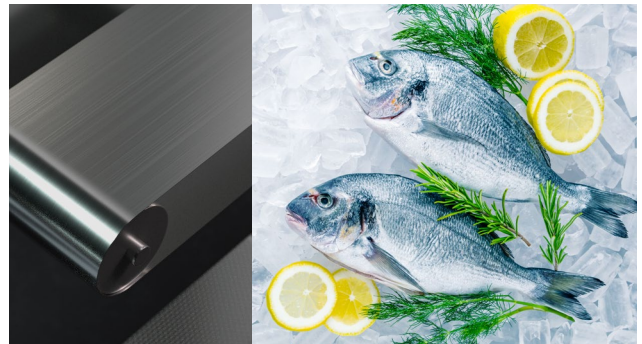
Individual Quick Freezer (IQF)

速冻各种水产鱼类, 海鲜等。最低工作温度零下50°C。

Quick freezing all kinds of fish and seafood. The lowest temperature reaches -50°C.

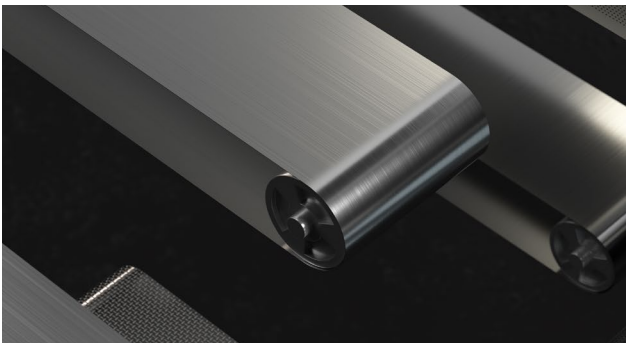
推荐使用钢带

Recommended Steel Belt: AT1200



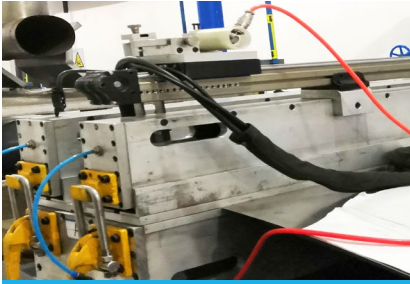
其他

Others

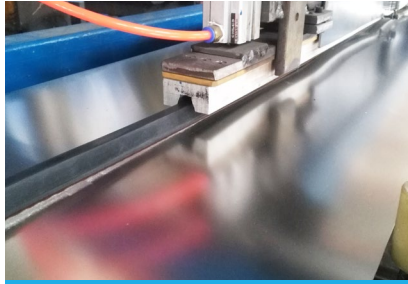


钢带服务

Steel Belt Services



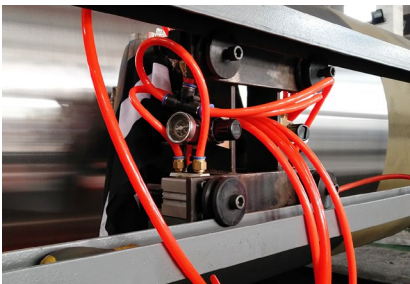
横向焊接 Cross welding



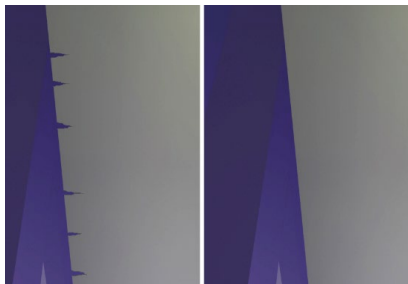
粘贴 V 形胶条 V-rope bonding



快速补挖 Disc patching



喷丸 Shot peening



裂纹修复 Crack repairing

铭客钢带型号及主要性能参数

Steel Belt Model & Main Specifications

钢材类型 Type of Steel	奥氏体不锈钢 Austenitic stainless steel	碳钢钢带 Carbon steel belt	
型号 Model	AT1200	CT1300	CT1100
指标 Index			
抗拉强度 (Mpa) Tensile strength (Mpa)	1200	1250	1080
屈服强度 (Mpa) Yield strength (Mpa)	980	1100	960
疲劳强度 (Mpa) ⁽¹⁾ Fatigue strength (Mpa)	±470	±430	±460
硬度 (HV _s) Hardness (HV _s)	360	380	340
延伸率 % Elongation %	25	10	8
焊接系数 Welding factor	0.70	0.75	0.75

⁽¹⁾ 测试样品的 50% 可以承受 2,000,000 次负荷循环。

⁽²⁾ 50% of the test specimen withstand a minimum of 2*10⁶ load cycles.

* 本资料中数据虽具代表性但并不受到绝对保证。数据亦会因所用材料不同而改变。

* The information and data presented in this data sheet are typical values, but not guaranteed. The information may be subjected to changes in material, properties and/or performance.



上海铭客传动系统有限公司

电话: 021-33616578

邮箱: lin@mingkebelt.com

地址: 上海市闵行区沪闵路 6088 号凯德闵行商业中心 1906 室, 邮编 201199

Shanghai Mingke Process Systems Co.,Ltd.

Tel: 021-33616578

E-mail: sales@mingkebelt.com

Add: Rm. 1906, CapitaLand Minhang Plaza, No. 6088 Humin Rd.,
Minhang Dist., Shanghai 201199, China

工厂 | 南京铭客传动系统有限公司

电话: 025-56806003

地址: 江苏省南京市高淳经济开发区桃园北路 50 号, 邮编 211316

Factory | Nanjing Mingke Process Systems Co.,Ltd.

Tel: 025-56806003

Add: No. 50 North Taoyuan Rd., Gaochun Economic Dvpt. Zone,
Nanjing City, Jiangsu Prov. 211316, China

www.mingkebelts.com



上海铭客传动系统有限公司
Shanghai Mingke Process Systems Co.,Ltd.