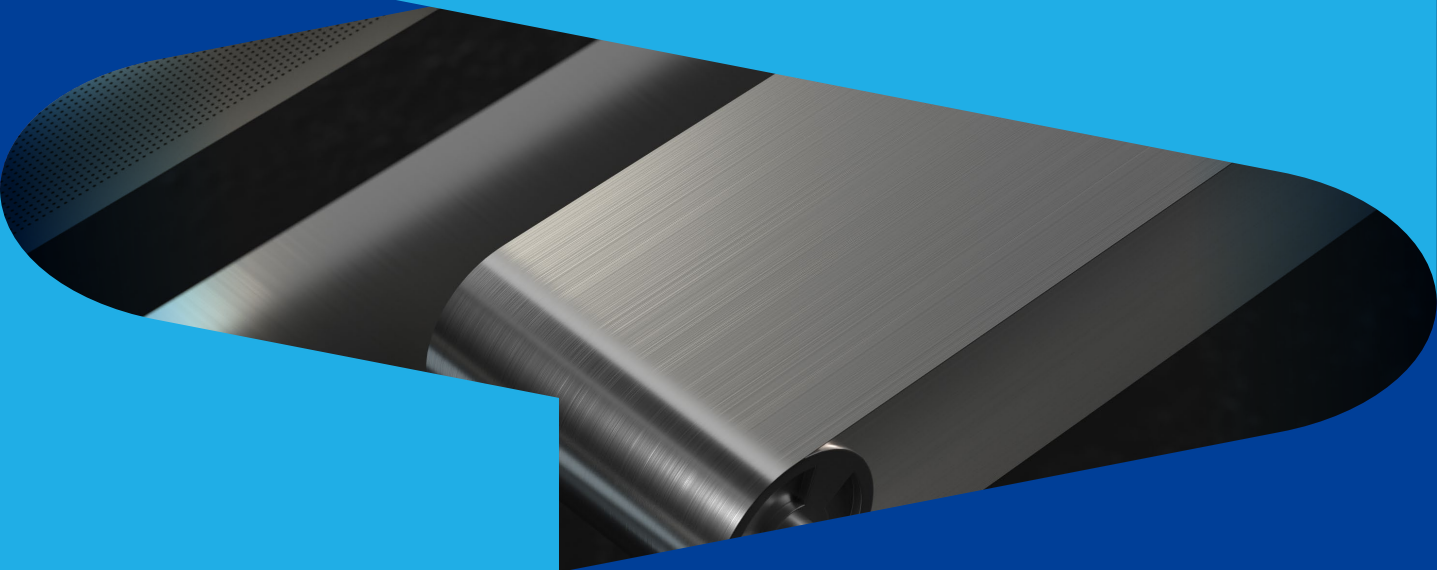




STEEL BELT SERVICES

钢带服务



旧钢带大修

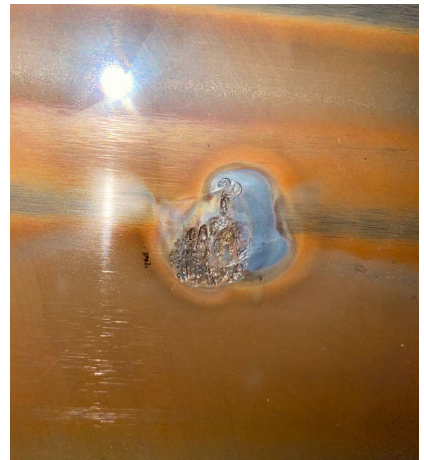
Used Steel Belt Repairing

在人造板行业中，钢带在连续运行多年后出现损伤并已影响正常生产，需要更换，但企业考虑更换新钢带高额成本问题，可以选择对旧钢带进行维修，以充分利用旧钢带的剩余价值。铭客拥有高强度钢带深加工能力和专业的售后维修团队，维修后的旧钢带依然可以满足使用标准。

In the wood-based panel industry, steel belts have been damaged after continuous operation for many years and have affected normal production and need to be replaced. However, companies considering the high cost of replacing new steel belts can choose to repair the old steel belts to make full use of the old steel belts with residual value. Mingke owns deep processing capabilities of high-strength steel belts and professional after-sales maintenance team, and the repaired steel belts can still meet the service standards.

维修前

Before Repairing



维修后

After Repairing

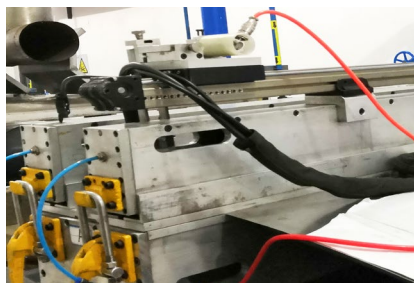
经过挖补、喷丸、插补，整体&局部砂光、凹坑&鼓包修复、整体精抛等多道工艺修复后。

After multiple repairs, like: disc patching, shot peening, overall & partial grinding, dent & bump repair and overall fine polishing, etc.

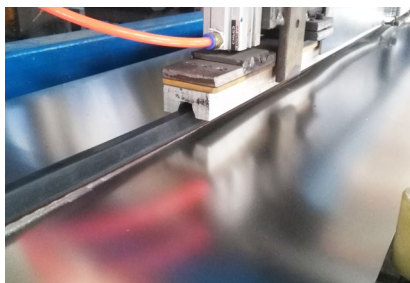


钢带服务

Steel Belt Services



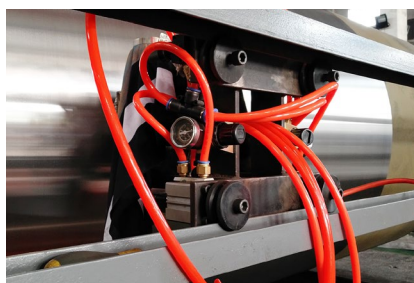
横向焊接 Cross welding



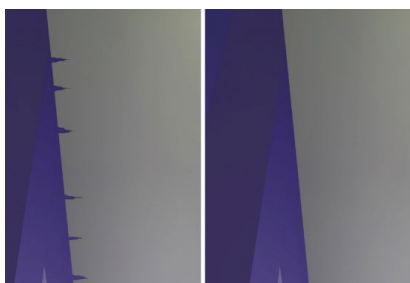
粘贴 V 形胶条 V-rope bonding



快速补挖 Disc patching



喷丸 Shot peening



裂纹修复 Crack repairing

什么样的旧钢带不适合大修？

What Kind of Used Steel Belt is Not Suitable for Repairing?

- (1) 例如火灾导致的钢带大幅度变形或长距离损毁。
(1) The steel belt which is greatly deformed or damaged for a long distance due to fire disaster.
- (2) 钢带出现大批量疲劳裂纹。
(2) The steel belt which has a large number of fatigue cracks.
- (3) 钢带纵向沟痕深度大于 0.2mm。
(3) The longitudinal grooves depth of the belt is greater than 0.2mm.





上海铭客传动系统有限公司

电话: 021-33616578

邮箱: lin@mingkebelt.com

地址: 上海市闵行区沪闵路 6088 号凯德闵行商业中心 1906 室, 邮编 201199

Shanghai Mingke Process Systems Co.,Ltd.

Tel: 021-33616578

E-mail: sales@mingkebelt.com

Add: Rm. 1906, CapitaLand Minhang Plaza, No. 6088 Humin Rd.,
Minhang Dist., Shanghai 201199, China

工厂 | 南京铭客传动系统有限公司

电话: 025-56806003

地址: 江苏省南京市高淳经济开发区桃园北路 50 号, 邮编 211316

Factory | Nanjing Mingke Process Systems Co.,Ltd.

Tel: 025-56806003

Add: No. 50 North Taoyuan Rd., Gaochun Economic Dvpt. Zone,
Nanjing City, Jiangsu Prov. 211316, China

www.mingkebelts.com



上海铭客传动系统有限公司
Shanghai Mingke Process Systems Co.,Ltd.