

上海铭客传动系统有限公司
电话: 021-33616578
邮箱: lin@mingkebelt.com
地址: 上海市闵行区沪闵路6088号凯德闵行商业中心1906室, 邮编201199

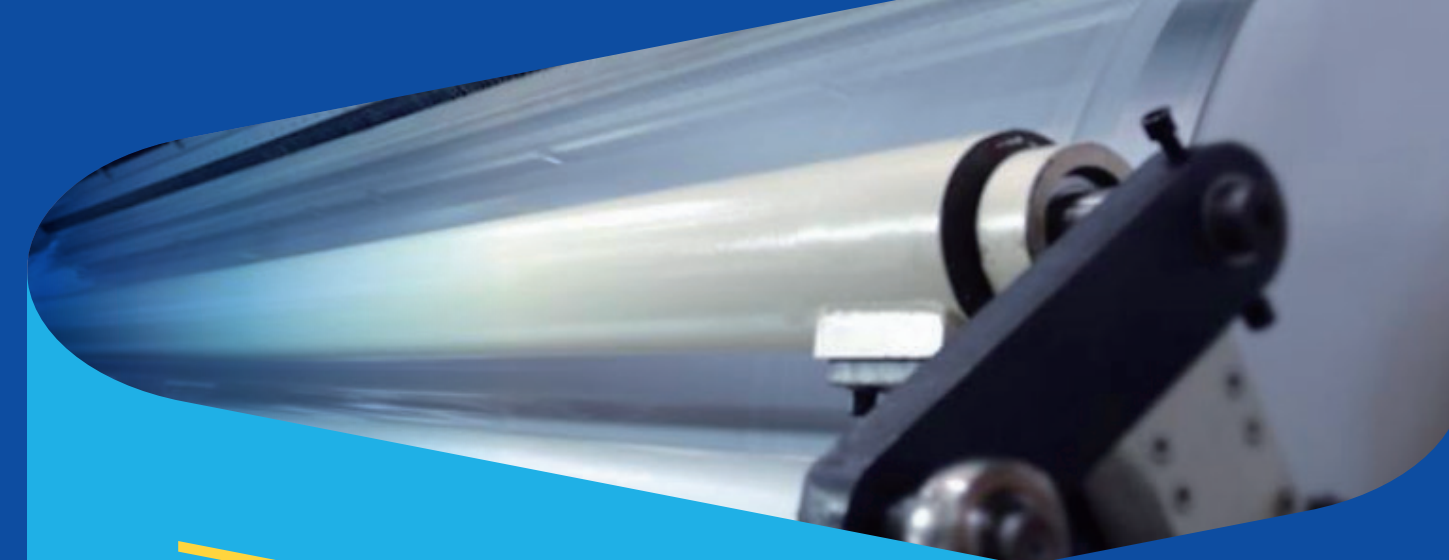
Shanghai Mingke Process Systems Co.,Ltd.
Tel: 021-33616578
E-mail: sales@mingkebelt.com
Add: Rm. 1906, CapitaLand Minhag Plaza, No.6088 Humin Rd.,
Minhang Dist., Shanghai 201199, China

工厂 | 南京铭客传动系统有限公司
电话: 025-56806003
地址: 江苏省南京市高淳经济开发区桃园北路50号, 邮编211316
Factory | Nanjing Mingke Process Systems Co.,Ltd.
Tel: 025-56806003
Add: No. 50 North Taoyuan Rd. Gaochun Economic Dvpt. Zone,
Nanjing City, Jiangsu Prov. 211316, China

www.mingkebelts.com

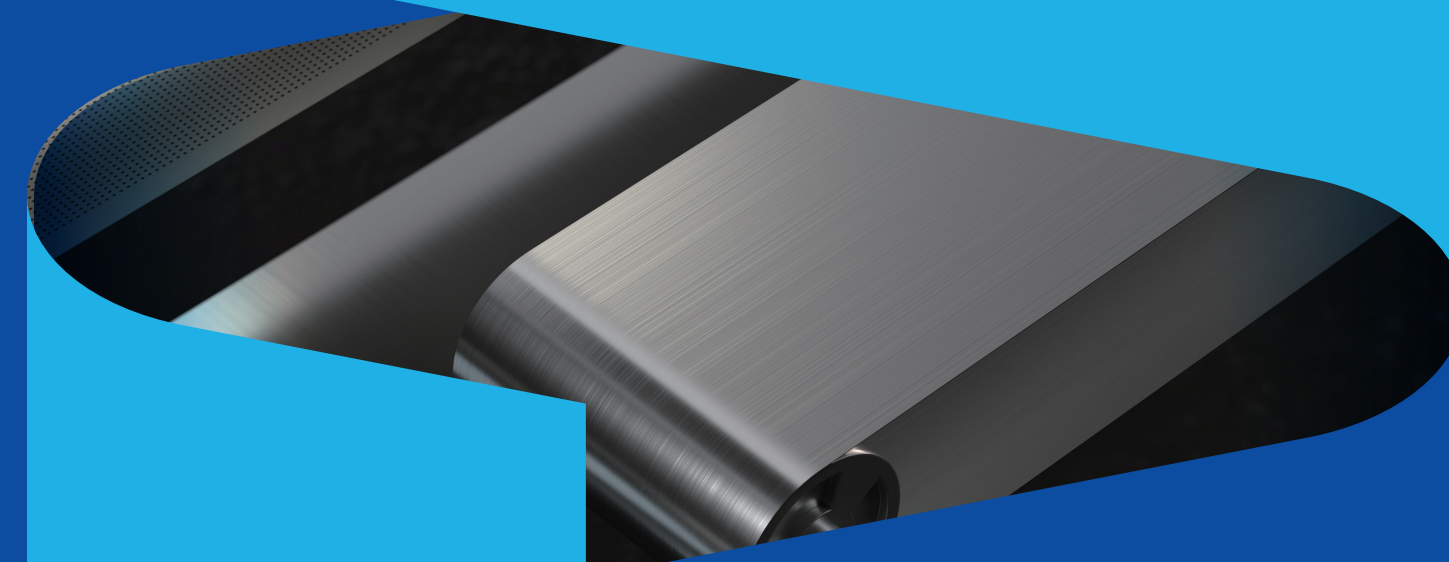


上海铭客传动系统有限公司
Shanghai Mingke Process Systems Co.,Ltd.



FILM CASTING STEEL BELT EQUIPMENT

薄膜流延钢带设备



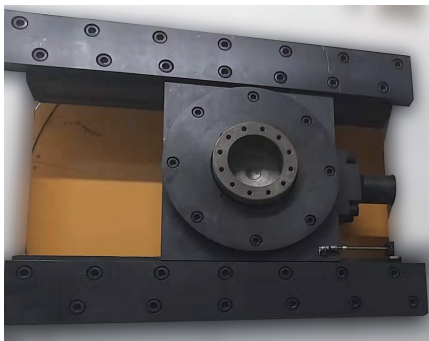
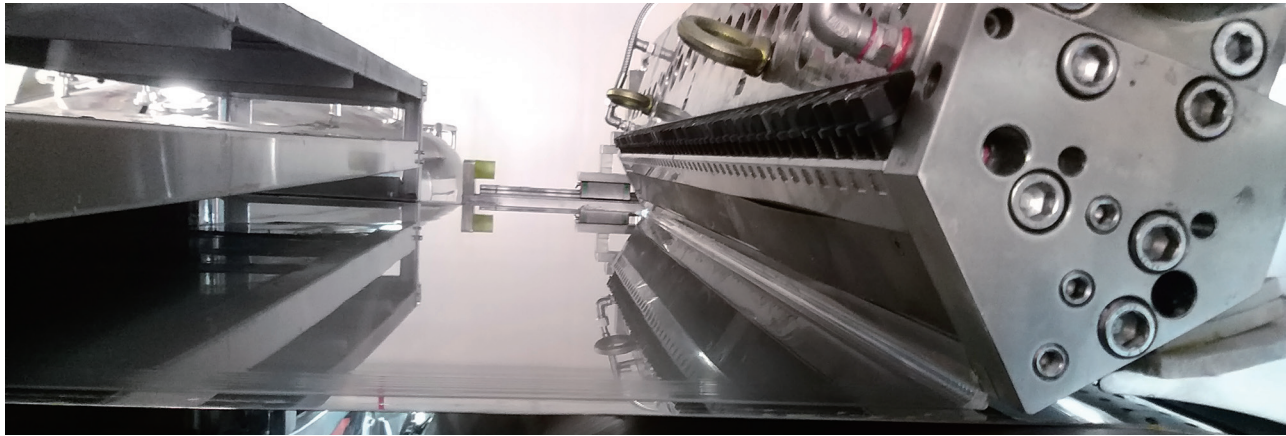
薄膜流延钢带设备 Steel Belt type Film Casting Machine

热塑性塑料的溶液或使用热固性塑料的预聚体溶液通过狭缝式模头涂布在可剥离的钢带上，经过一个烘道的加热干燥，进而熔融塑化成膜层冷却下来后，最终得到厚度均匀表面光滑平整的产品，薄膜产品从钢带表面上剥离下来卷取而成膜。

钢带采用液压张紧装置，液压张紧装置同时具备张紧和纠偏的功能。纠偏装置采用MKHST（液压纠偏）先进的控制方式，能有效防止钢带跑偏，保证钢带在规定范围内（误差约正负5mm）运转。

The thermoplastic solution or the prepolymer sol of thermosetting plastic is coated on the strippable steel belt through a slit die, heated and dried in a drying tunnel, and then melted and plasticized into a film layer after cooling down, and finally the product with a uniform thickness and a smooth surface is obtained, and the film product is peeled off from the surface of the steel belt and rolled to form a film.

Steel belt adopts the hydraulic tensioning device, and the hydraulic tensioning device has the functions of belt tensioning and tracking at the same time. The belt tracking device adopts the advanced control method of MKHST (hydraulic deviation correction), which can effectively prevent the deviation of the steel belt and ensure that the steel belt runs within the specified range (tolerance +/-5mm).



最大可达50吨的张力保证当油缸张紧后钢带下表面与底板保持小于50mm安全距离不接触。薄膜可以在环形钢带上旋转一周后再在狭缝模头正下方剥离。

The maximum tension of 50 tons ensures that when the cylinder is tensioned, the lower surface of the steel belt and the bottom plate keep a safe distance of less than 50mm without contact. The film can be peeled off directly under the slot die after one circle rotation on the endless steel belt.



钢带采用液压张紧装置，液压张紧装置同时具备张紧和纠偏的功能。纠偏装置采用MKHST（液压纠偏）先进的控制方式，能有效防止钢带跑偏，保证钢带在规定范围内（误差约正负5mm）运转。

Steel belt adopts the hydraulic tensioning device, and the hydraulic tensioning device has the functions of belt tensioning and tracking at the same time. The belt tracking device adopts the advanced control method of MKHST (hydraulic deviation correction), which can effectively prevent the deviation of the steel belt and ensure that the steel belt runs within the specified range (tolerance +/-5mm).

薄膜流延烘干装置 Film Casting Drying Unit

烘干装置包含烘箱和换热器。

烘箱其结构尺寸根据设备总长可定制，烘箱可采用上下布局，侧开门带观察窗口。烘箱可上、下加热，上、下均配备风机，每区温度独自控温，采用PID调节自动恒温。优秀的烘箱干燥方案可以给客户带来极高的能效，定制的换热器可以满足客户各种的产能需求。我们的设计团队的工程师可以提供全面的技术支持。

The drying unit comprises an oven and a heat exchanger.

The structure and size of the oven can be customized according to the total length of the film casting machine. The oven can be arranged up and down, and the side door with an observation window. The oven can be heated up and down, and it's equipped with upper and lower fans. The temperature of each zone is independently controlled, and the PID is used to adjust the constant temperature automatically. An excellent oven drying solution can bring customers extremely high energy efficiency. Customized heat exchangers can meet various production capacity demands of customers. Engineers from our design team can provide comprehensive technical support.



薄膜流延行业专用钢带 Steel Belt for Film Casting

钢带耐蠕变性能好，平整性、直线度好，与膜接触面粗糙度为镜面或2B面，表面无划痕。

Steel belt has high creep resistance, good flatness & straightness, and the surface contact with film is mirror surface or 2B surface which has no scratches.



钢带型号 Steel Belt Model

AT AT1200

钢带尺寸 Dimension of Steel Belt

- 长度 Length- $\leq 150\text{ m}$pc
- 宽度 Width- 800-2000 mm
- 厚度 Thickness- 0.5/0.8/1.0/1.2 mm

应用 Applications

- 三醋酸纤维 (TAC) - 光学薄膜
Triacetate Fiber (TAC) - optical film
- 聚酰亚胺 (PI) - 柔性线路板
Polyimide (PI) - flexible circuit board
- 聚碳酸酯 (PC) - 磁带等材料
Polycarbonate (PC) - tape and other materials
- 聚丙烯 (PP) - 包装材料
Polypropylene (PP) - packaging material
- 水溶性膜 (PVA) - 洗衣凝珠等一次性包装材料
Water-soluble film (PVA) - disposable packaging materials such as laundry beads

主要参数 Main Parameters

屈服强度 Yield strength	980N/mm ²
抗拉强度 Tensile strength	1200N/mm ²
焊接指数 Welding factor	0.70(Rm weld/Rm)
硬度 Hardness	360±5%
材料密度 Material density	7.9g/cm ³
热膨胀率(20-200°C) Thermal expansion rate (20-200°C)	18x10 ⁻⁶ m/m°C
钢带运行温度范围 Steel belt operating temperature range	-50-300 °C