



南京铭客传动系统有限公司

电话: +86 25-56806003

邮箱: marketing@mingkebelt.com

地址: 南京市高淳经济开发区桃园北路 50 号, 邮编 211316

Nanjing Mingke Process Systems Co.,Ltd.

Tel: +86 25-56806003

Email: sales@mingkebelt.com

Add: No. 50 North Taoyuan Rd., Gaochun Economic Dvpt. Zone,

Nanjing City, Jiangsu Prov. 211316, China

上海办事处

电话: +86 189 1597 9385

地址: 上海市青浦区诸光路 1588 弄虹桥世界中心 E2 栋 312 室

Shanghai Office

Tel: +86 189 1597 9385

Add: Rm. 312, 3th Floor, Bldg. E2, Hongqiao World Center,

Lane 1588, Zhuguang Rd., Qingpu Dist., Shanghai 201799, China

广州办事处

电话: +86 189 1597 9385

地址: 广州市番禺区石楼镇石清公路 78 号 (中创云谷) A 栋 512 室

Guangzhou Office

Tel: +86 189 1597 9385

Add: Rm 512, Building A, Zhongchuang Yungu, No. 78 Shiqing Rd.,

Shilou Town, Panyu Dist., Guangzhou City, Guangdong Prov., China

波兰售后服务中心

After-sale Service Center in Poland

Wilhelm Herm. Muller Polska Sp z o.o.

Add: 85-862 Bydgoszcz, ul. Solna 20, Poland

[www.mingkebelt.com](http://www.mingkebelt.com)



南京铭客传动系统有限公司  
Nanjing Mingke Process Systems Co., Ltd.

铭客 (Mingke),

专精特新“小巨人”企业,

专注于环形钢带 - 高强度连续成型模具带的生产制造,

并提供以环形钢带为载体的连续化流程工艺解决方案。

铭客在中国、中国台湾、波兰、土耳其、泰国、

澳大利亚、越南、巴西等全球10+国家和地区有销售和服务中心。

MINGKE

National "Specialised, Refined, Distinctive and Innovative" "Little Giant"

Enterprise, specialized in endless steel belt, high strength continuous

molding belt and providing continuous process solutions based on

endless steel belt.

Our sales and service centers are located in 10+ countries

and regions around the world, such as China, Taiwan

China, Poland, Turkey, Thailand, Australia,

Vietnam, Brazil and so on.

橡胶行业  
RUBBER INDUSTRY



## 鼓式硫化机专用模具带

### Molding Belt for Rotocure

鼓式硫化机是一种可连续硫化的专用设备。铭客高强度环形模具带在硫化过程中起到传递压力和热量的作用，是确保产品质量的重要部件。

Rotocure is a specialized equipment that can continuously vulcanize rubber. Mingke high strength endless molding belt plays a role in transferring pressure and heat during the vulcanization process, and is an important component to ensure product quality.



#### 应用

##### Applications

- 橡胶板、片 Rubber sheets
- 橡胶带制品 Rubber belts
- 同透地板 Homogeneous PVC flooring
- 橡胶输送带 Rubber conveyor belt
- 橡胶内衬 Rubber lining
- 防水材料 Waterproof material
- 印刷橡皮布 Printing mackintosh
- 其他 Others

#### 模具带尺寸

##### Dimension of Molding Belt

- 长度 Length- 可定制 Customizable
- 宽度 Width- 600-6000 mm
- 厚度 Thickness- 0.6-2.3 mm

#### 模具带型号

##### Molding Belt Model



## 平板硫化机专用钢板

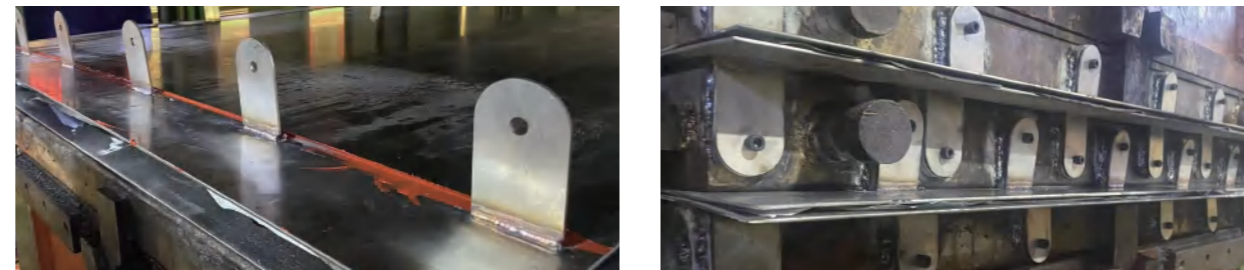
### Steel Plate for Plate Vulcanizer

平板硫化机是一种用于各种橡胶模制品硫化成型的专用设备，配置优质的钢板，可以提升产品质量，减少更换频率。铭客提供的钢板双面精磨，有良好的平整度和光洁度，且硬度较高，满足平板硫化机严苛的生产环境。

Plate Vulcanizer is a special equipment for various rubber molded product of the vulcanization molding, the configuration of high-quality Steel plate, can improve product quality, reduce the frequency of replacement. The steel plates provided by Mingke are grinding on both side. It has good flatness and smoothness, and the hardness meet the harsh production environment of the Plate Vulcanizer.

#### 平板硫化机单 / 双层热板安装

##### Installation of Single-layer / Double-layer Hot Plate for Plate Vulcanizer



#### 应用

##### Applications

- 橡胶板 Rubber sheet
- 橡胶输送带 Rubber conveyor belt

#### 钢板尺寸

##### Dimension of Plate

- 长度 Length- ≤150 m/pc
- 宽度 Width- 600-6000 mm
- 厚度 Thickness- 1.0-3.0 mm

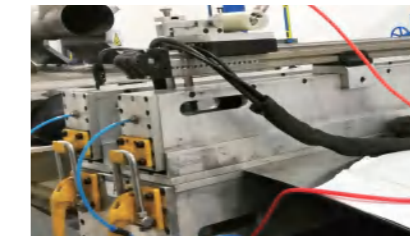
#### 钢板型号

##### Steel Plate Model



## 模具带服务

### Molding Belt Services



横向焊接 Cross Welding



粘贴 V 形胶条 V-rope Bonding



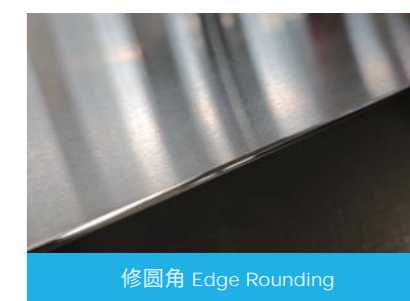
快速补挖 Disc Patching



喷丸 Shot Peening



裂纹修复 Crack Repairing



修圆角 Edge Rounding

#### 模具带型号及主要性能参数

##### Molding Belt Model & Main Specifications

钢材类型 Type of steel	马氏体不锈钢钢带 Martensitic stainless steel belt	
指标 Index	型号 Model	MT1650
抗拉强度 (Mpa) Tensile strength (Mpa)		1600
屈服强度 (Mpa) Yield strength (Mpa)		1550
硬度 (HV <sub>s</sub> ) Hardness (HV <sub>s</sub> )		480
延伸率 % Elongation %		5
焊接系数 Welding factor		0.8

\* 本资料中数据虽具代表性但并不受到绝对保证。数据亦会因所用材料不同而改变。  
\* The information and data presented in this data sheet are typical values, but not guaranteed. The information may be subjected to changes in material, properties and/or performance.